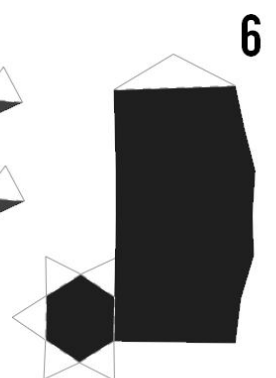
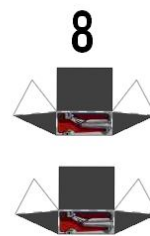
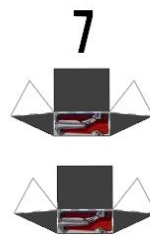
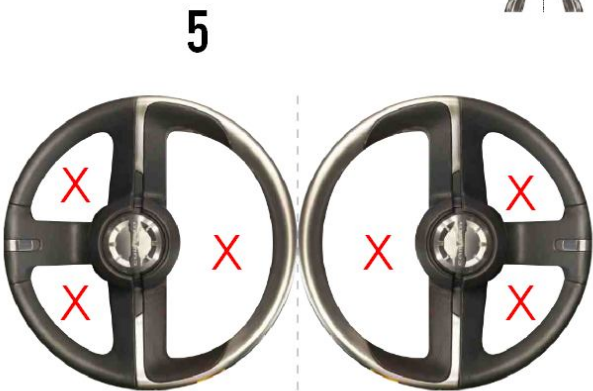
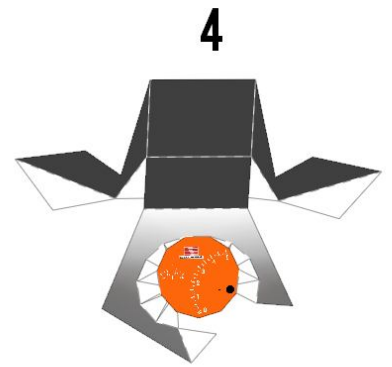
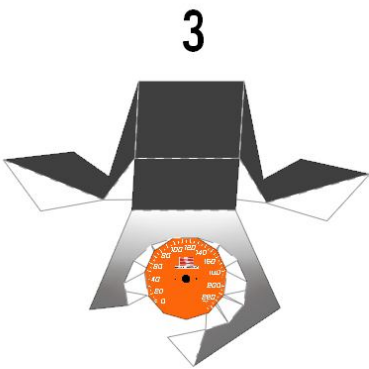
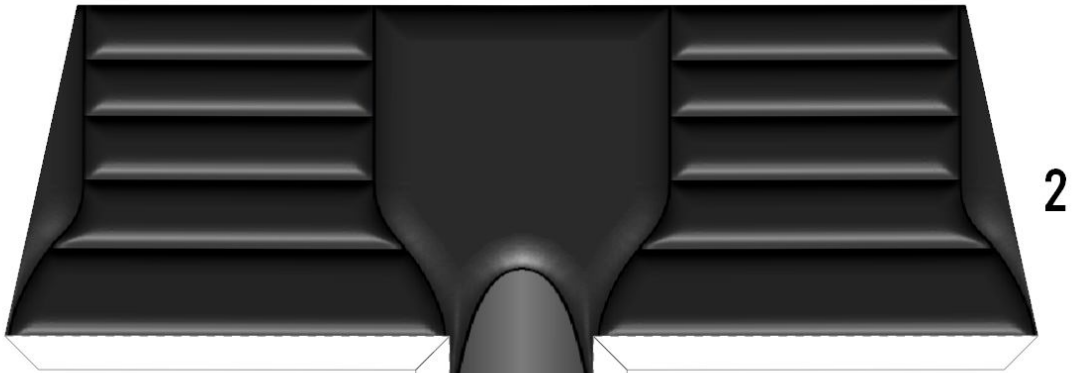
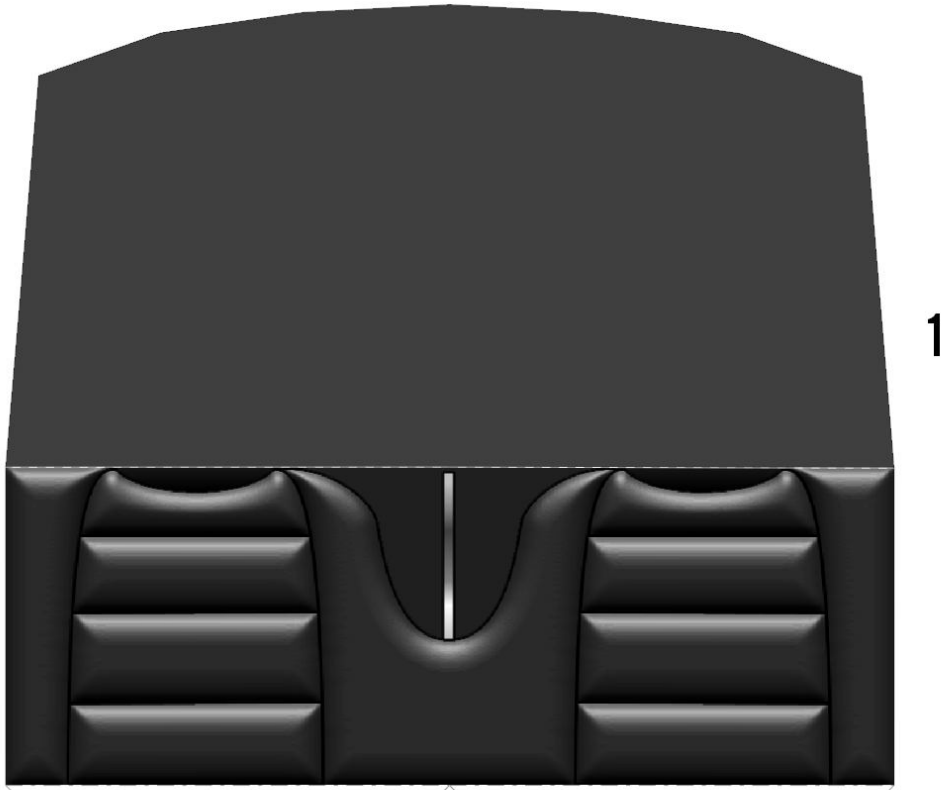
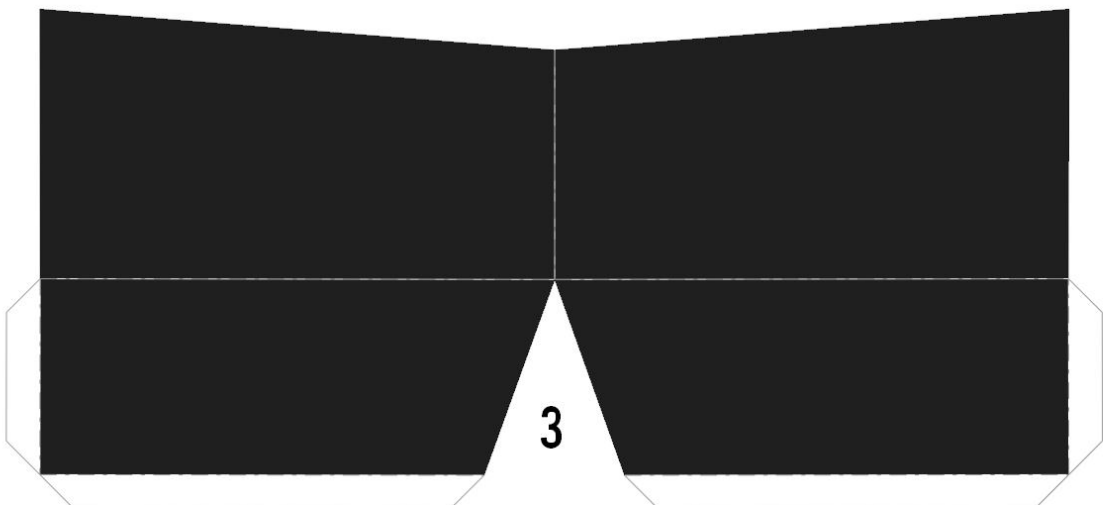
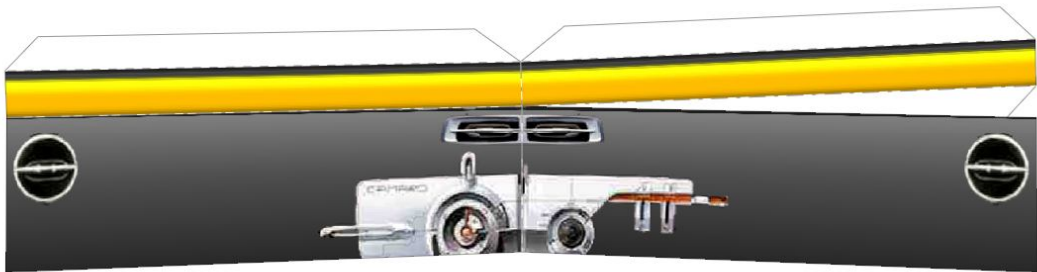
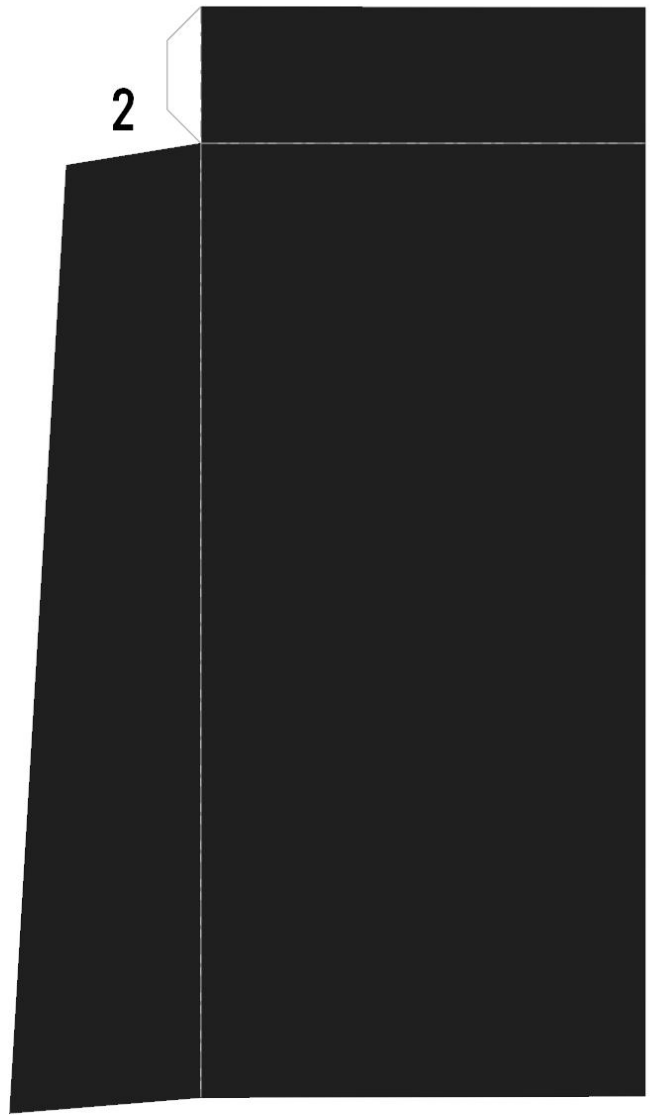
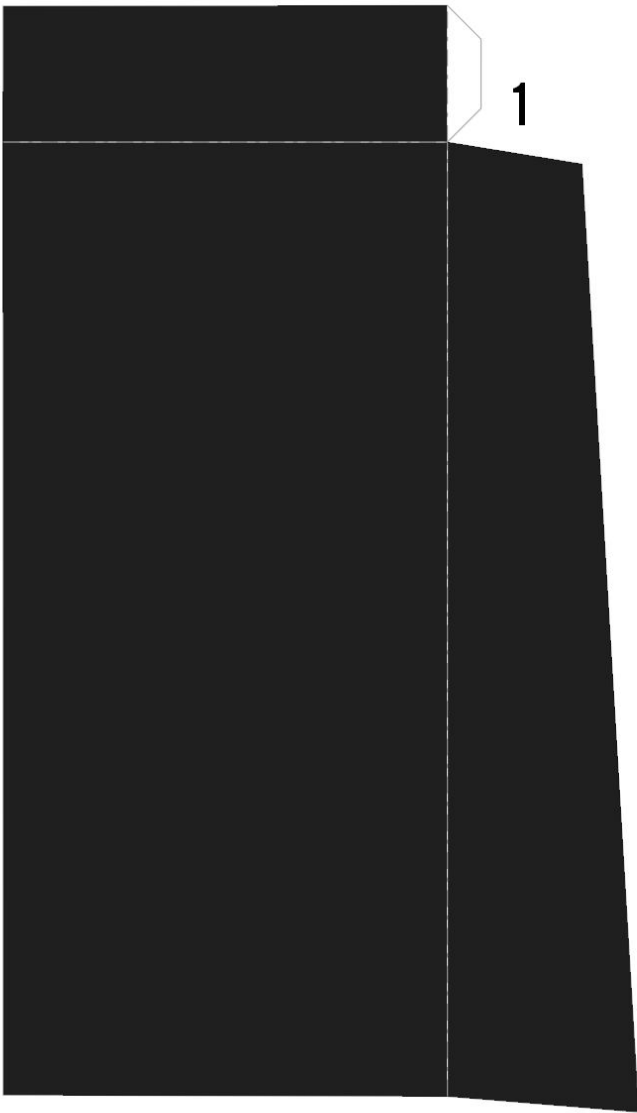


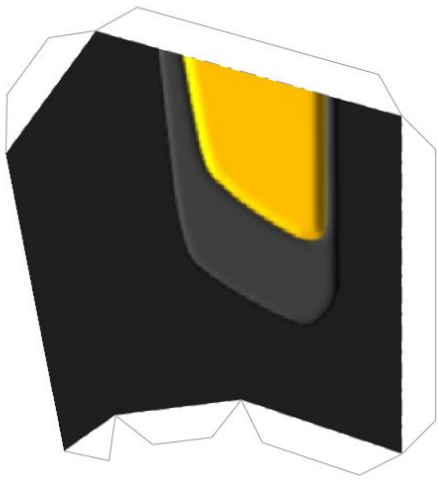
A



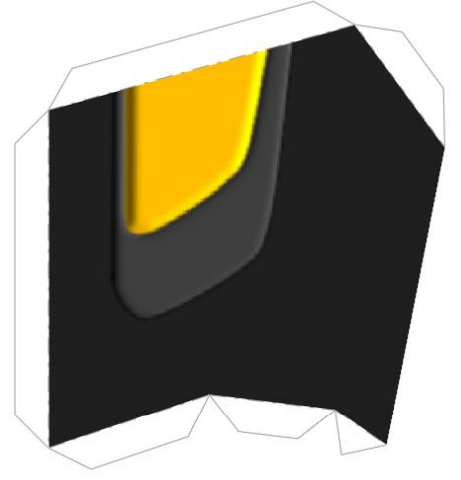
B



C



4



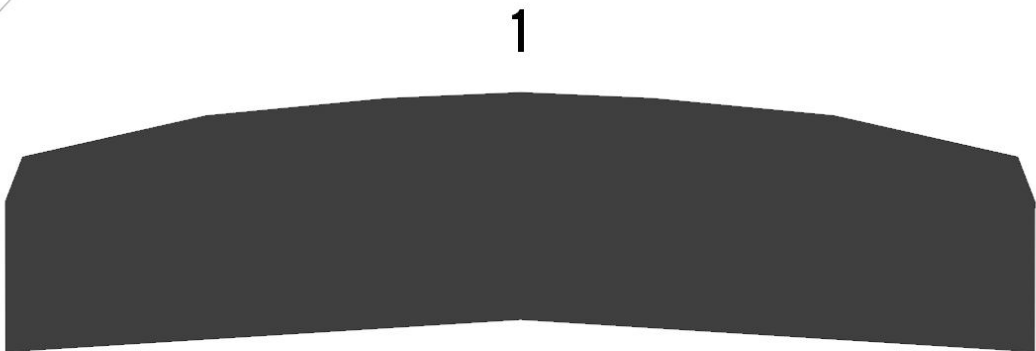
5



2



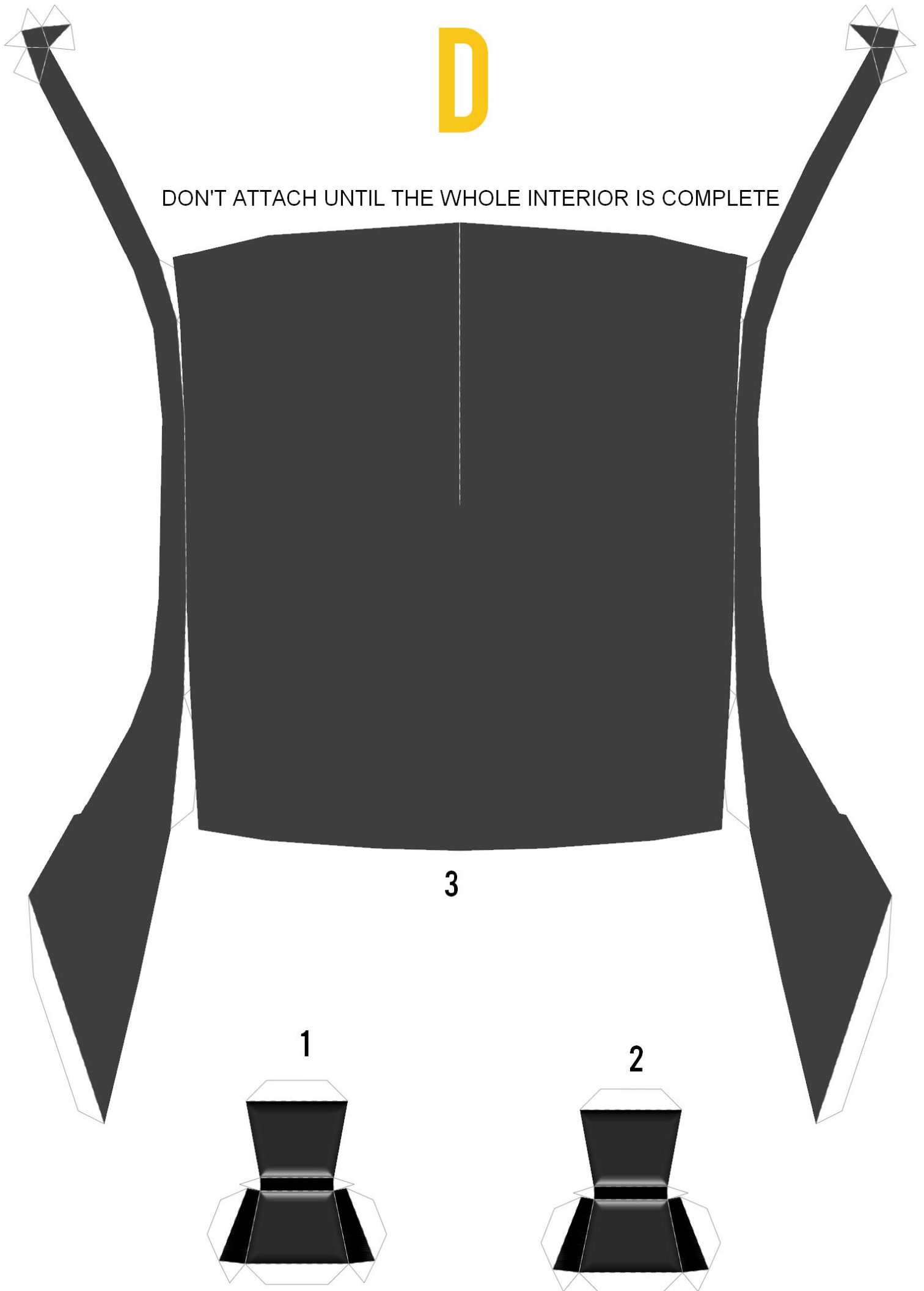
3



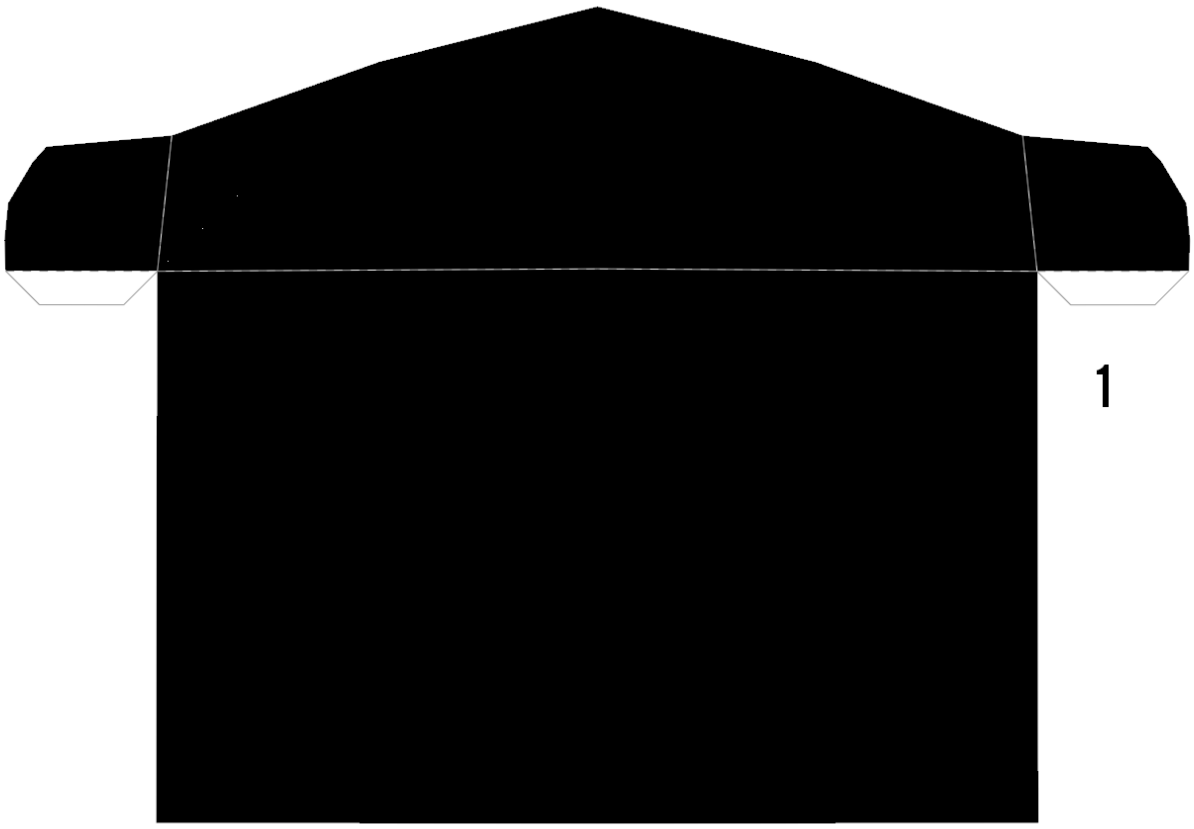
1

D

DON'T ATTACH UNTIL THE WHOLE INTERIOR IS COMPLETE



E



F



BUMBLEBEE

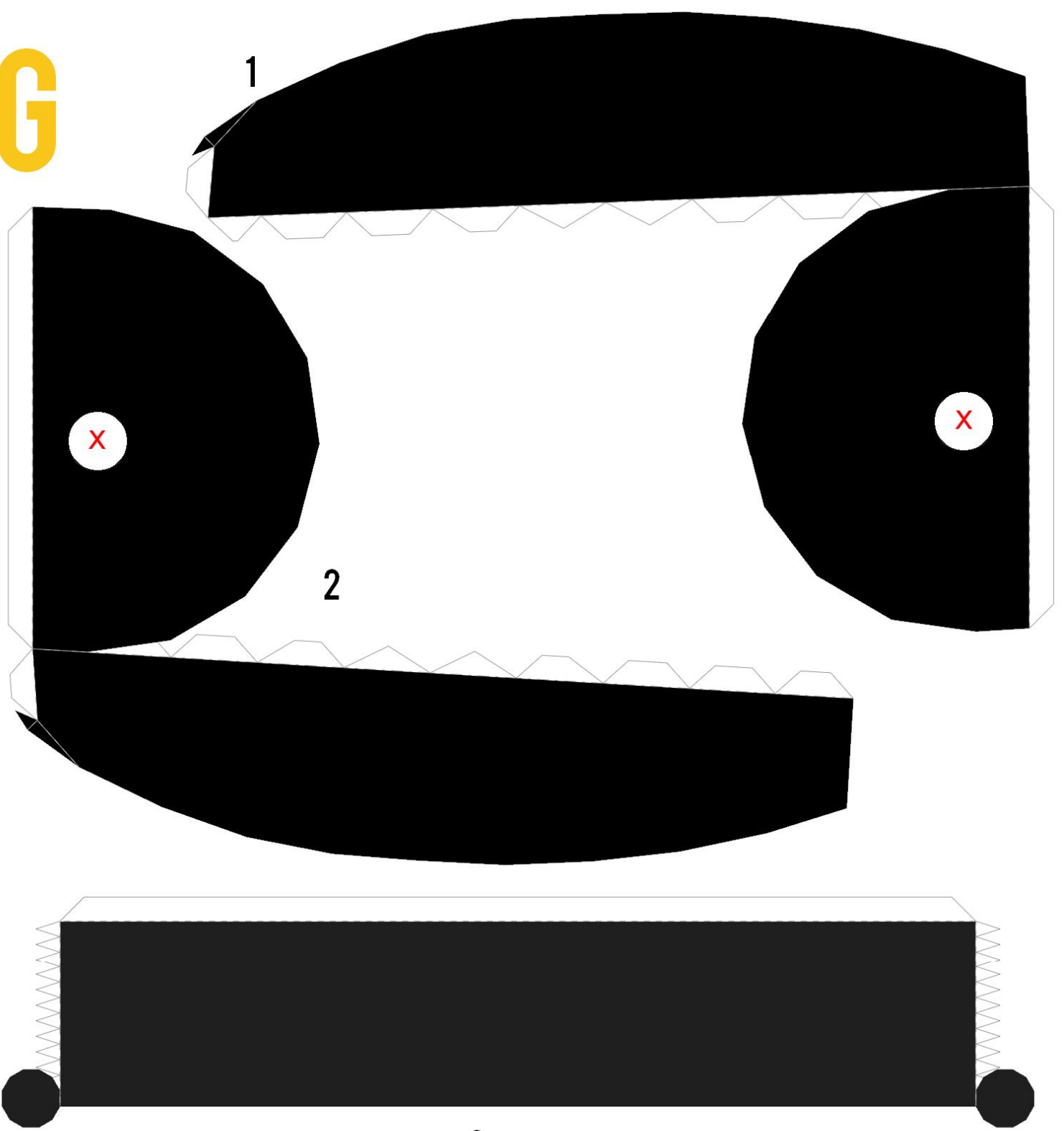
1/12 PAPERMODEL

DESIGNED BY ANDREW 'SKIP' SKUPINSKI

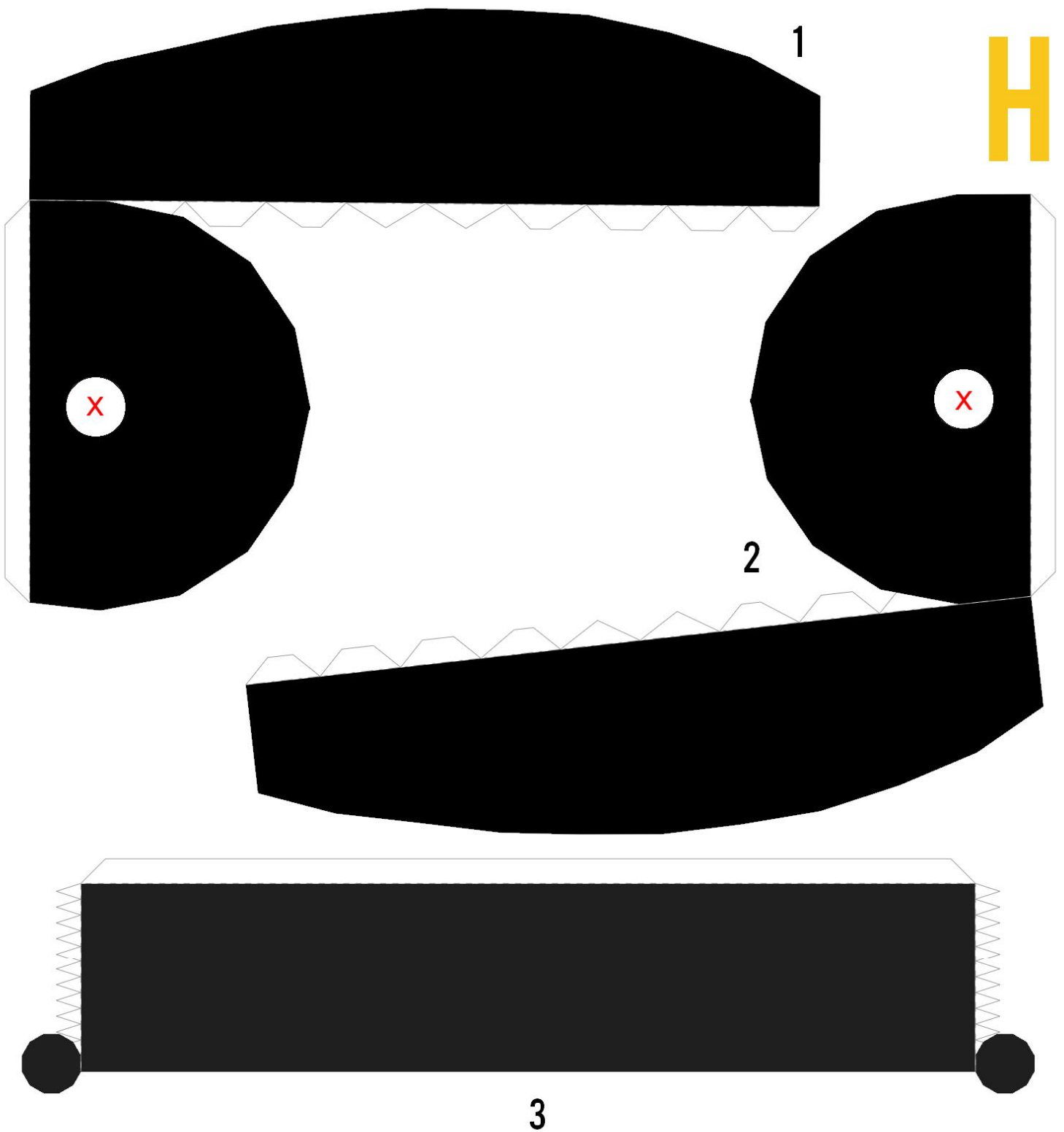


1

G

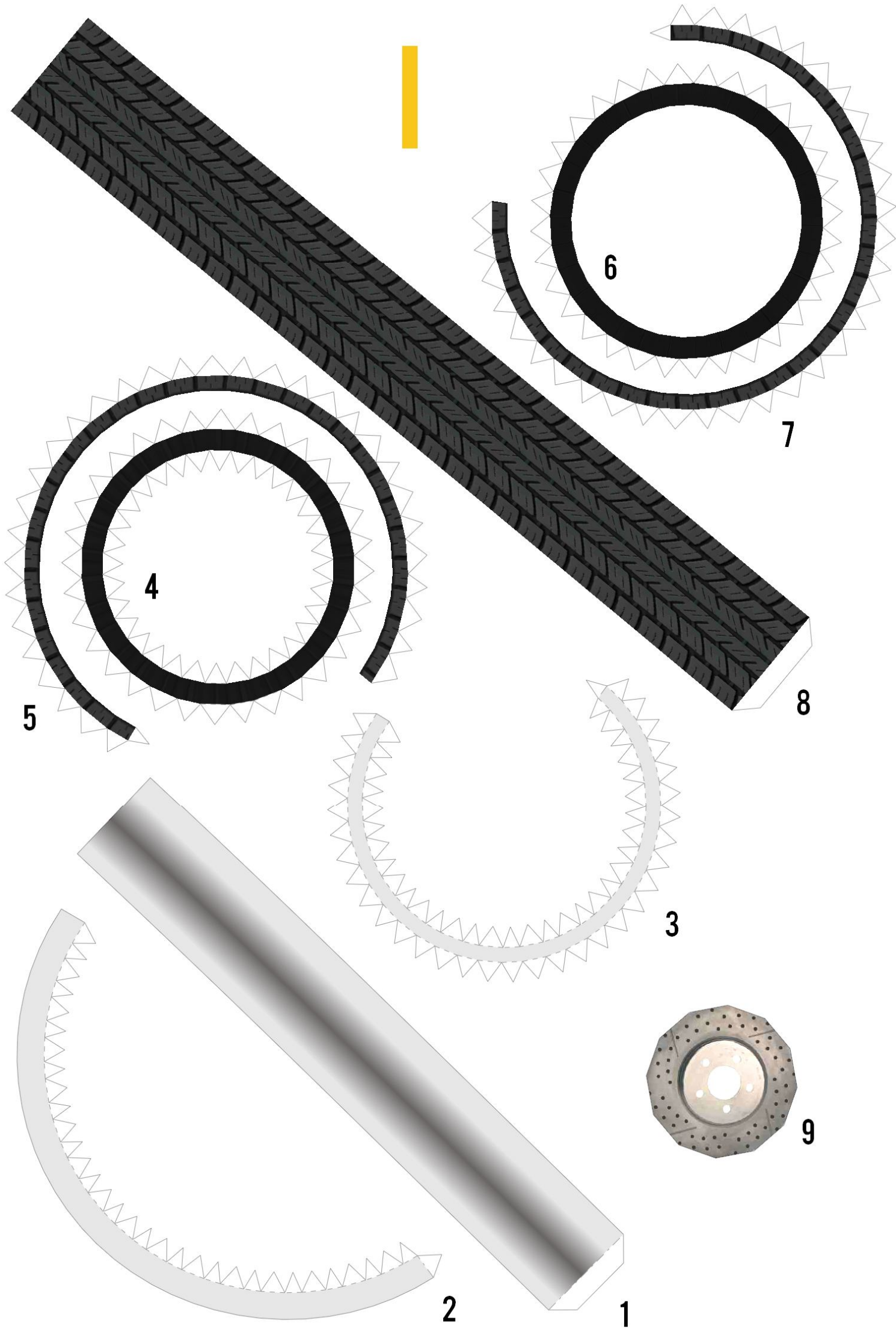


3
REAR AXLE

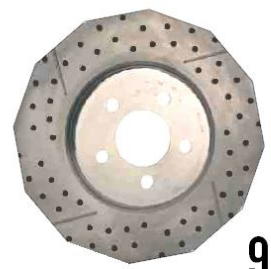
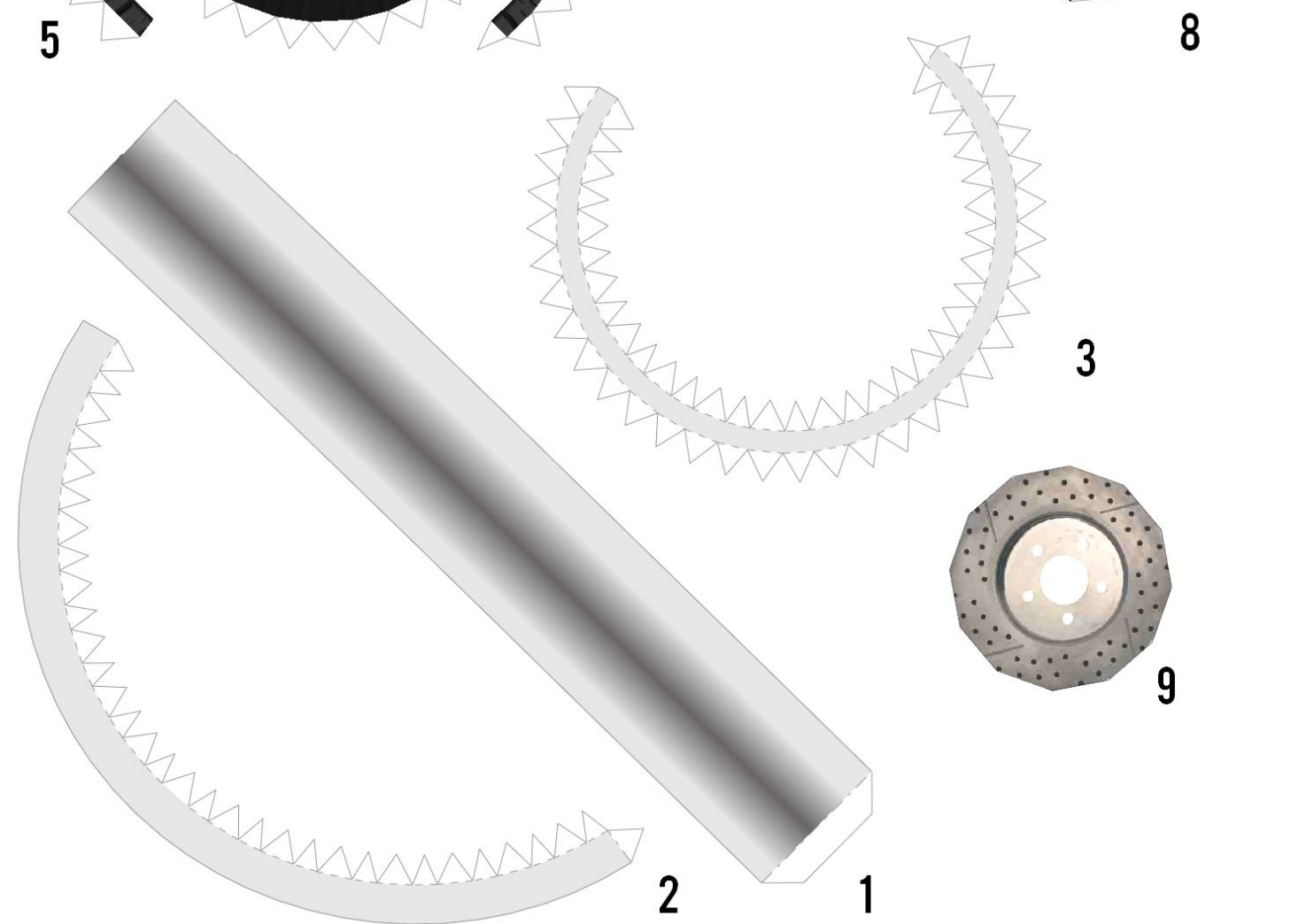
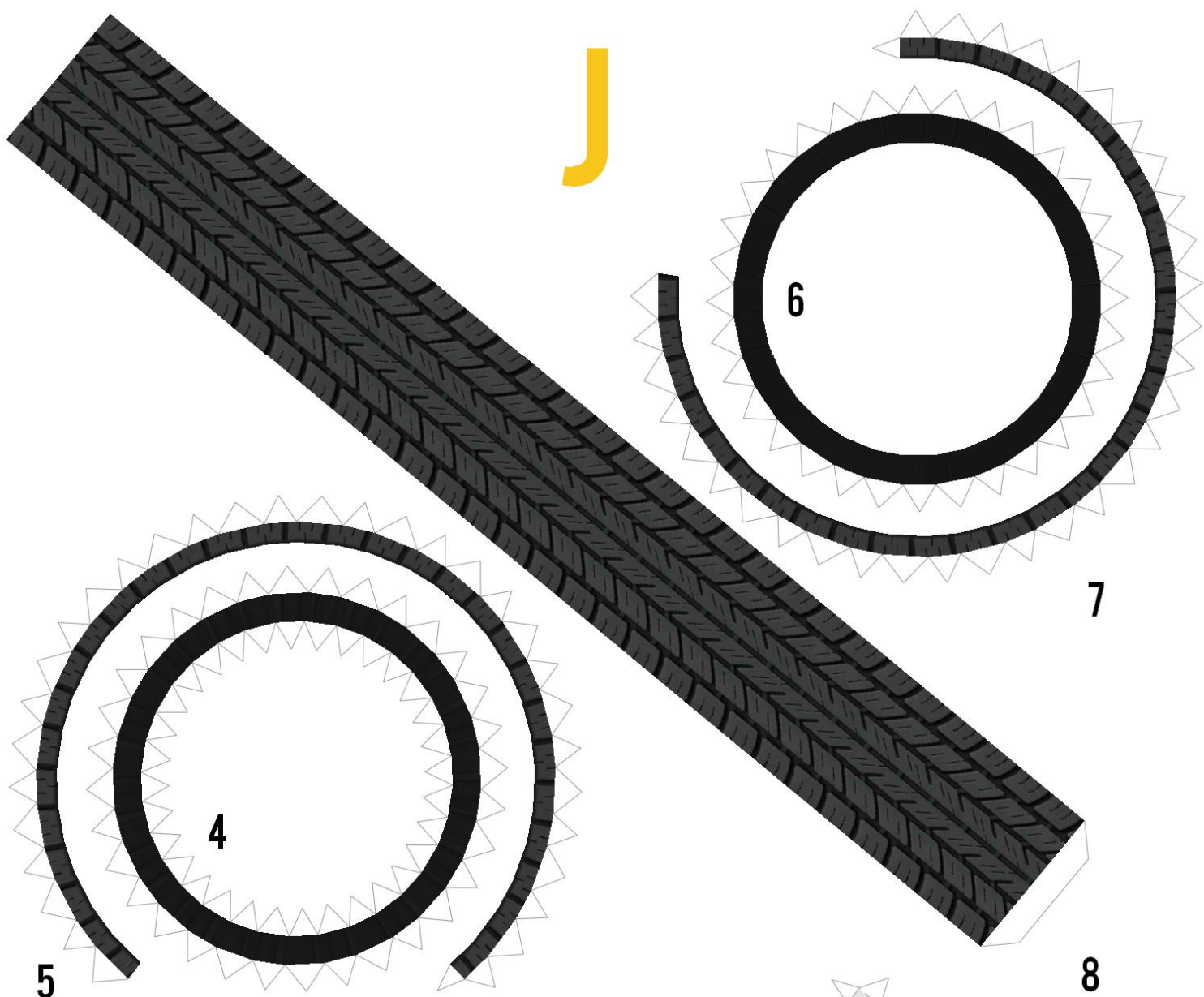


FRONT AXLE

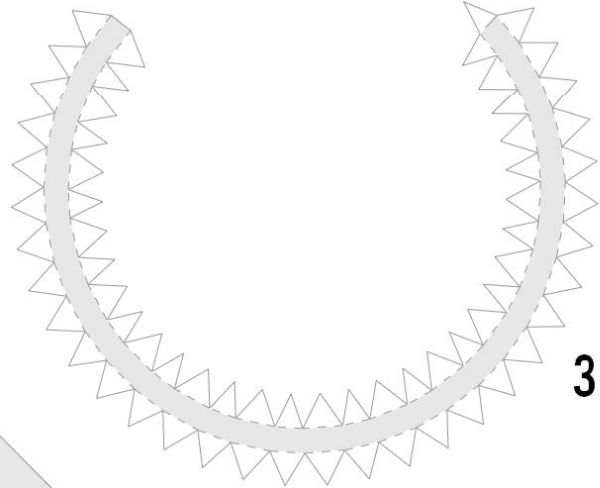
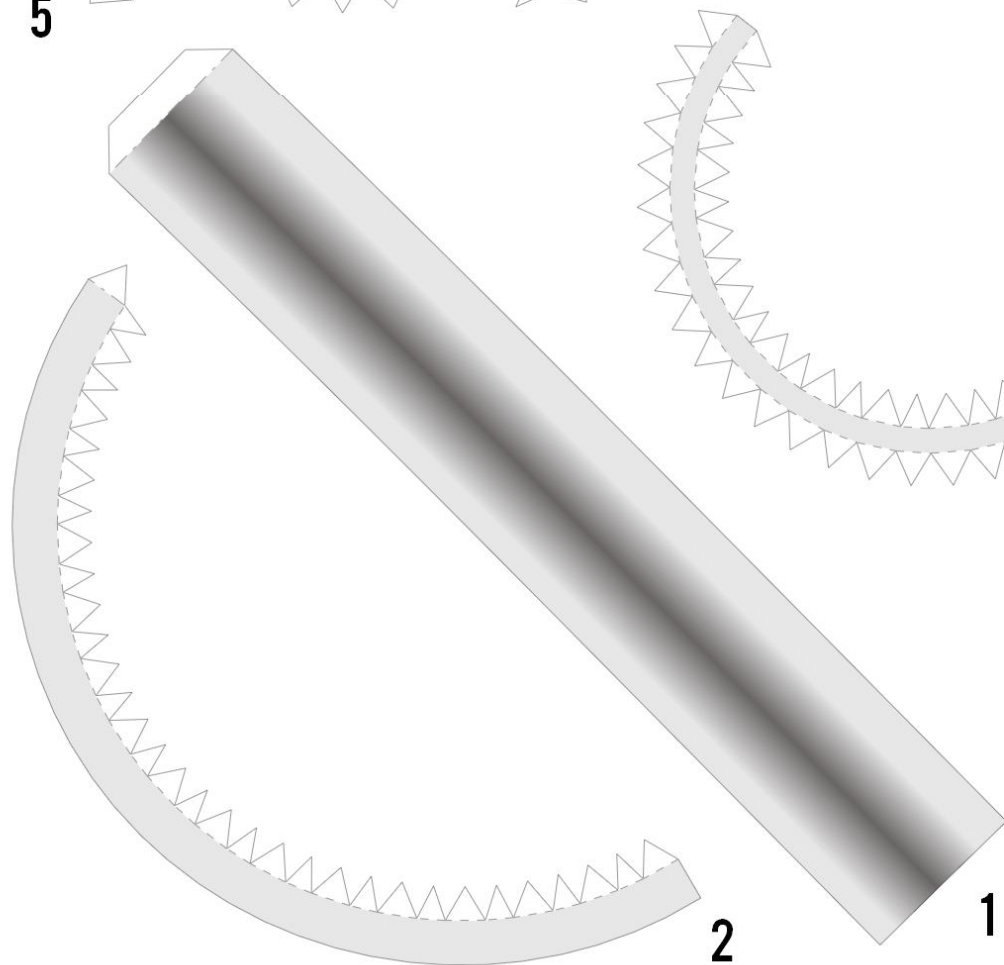
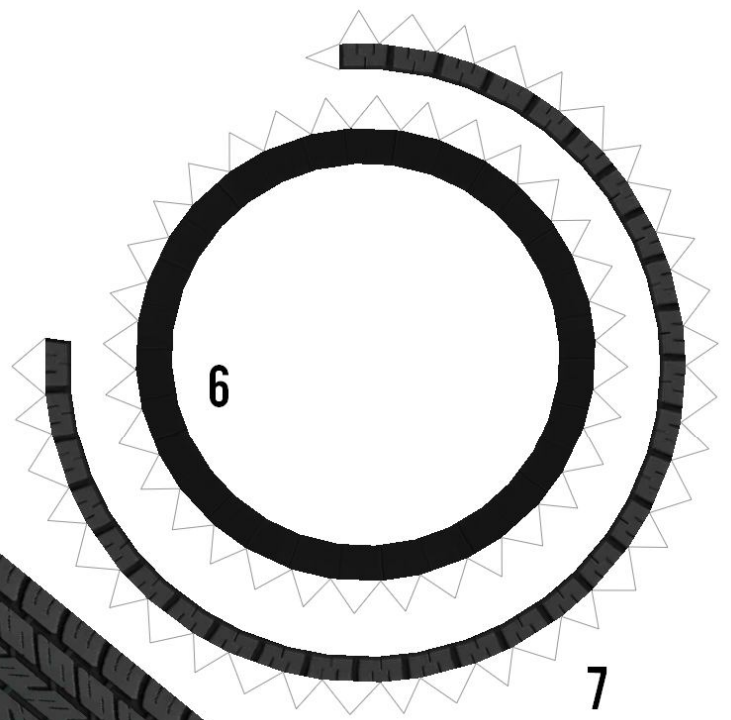
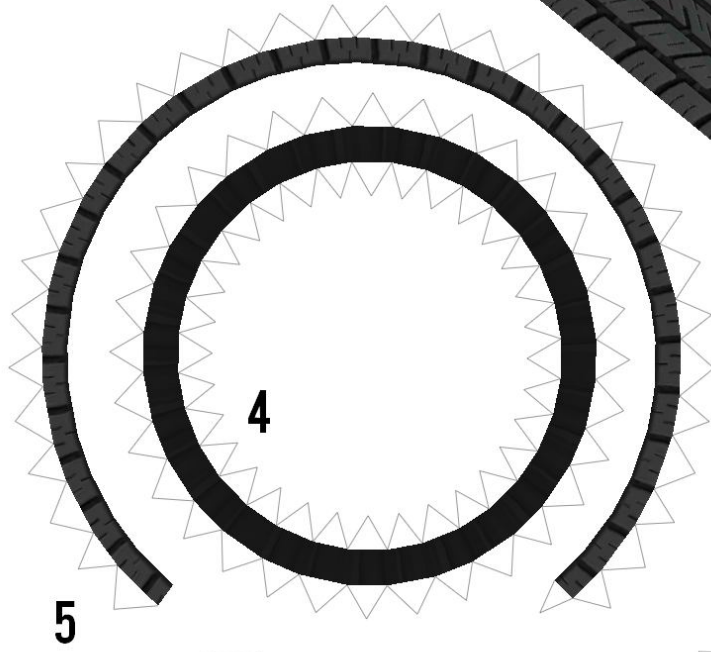
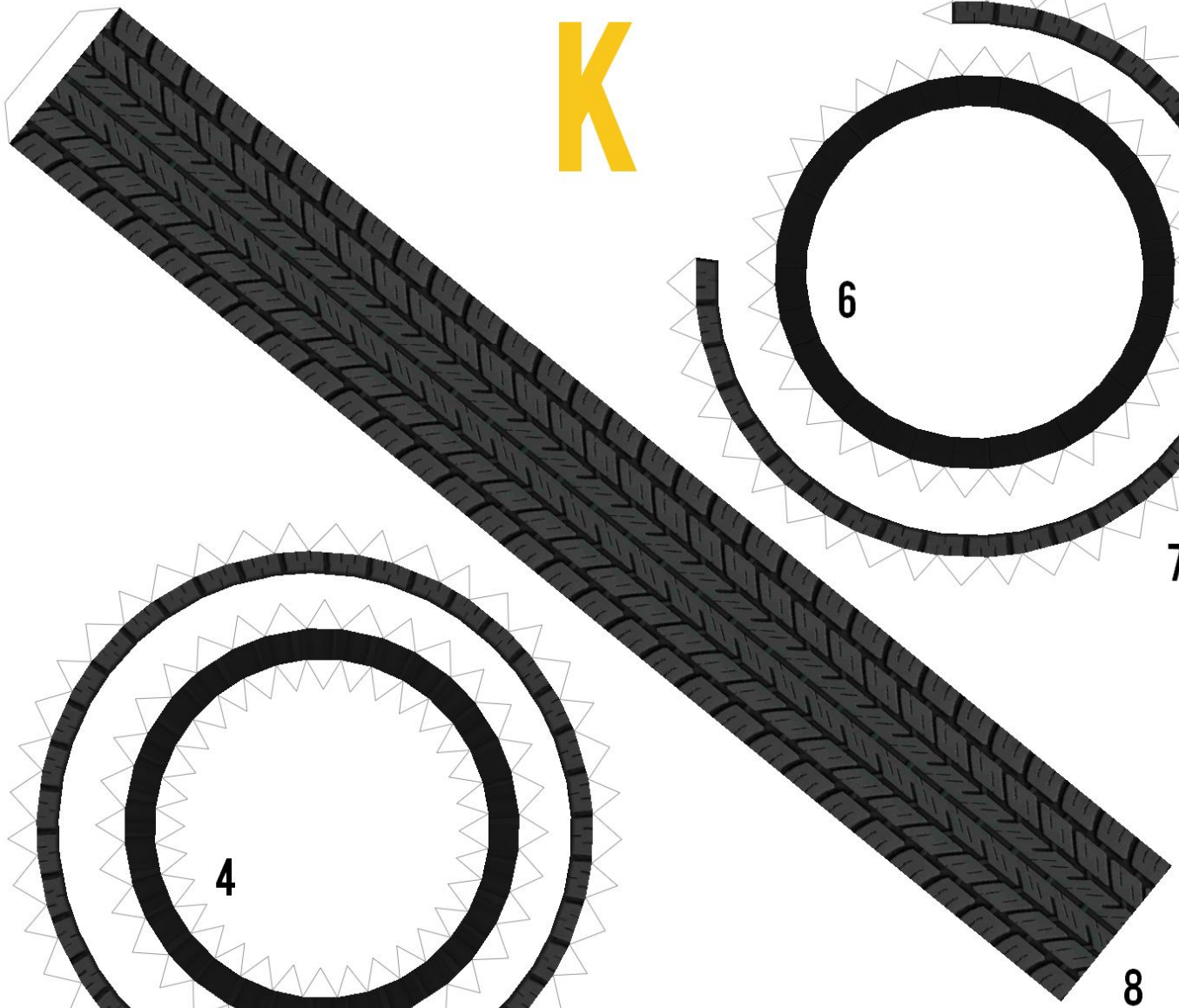
YOU CAN TELL WHICH AXLE IS WHICH BECAUSE
THE REAR AXLE IS LONGER THAN THE FRONT



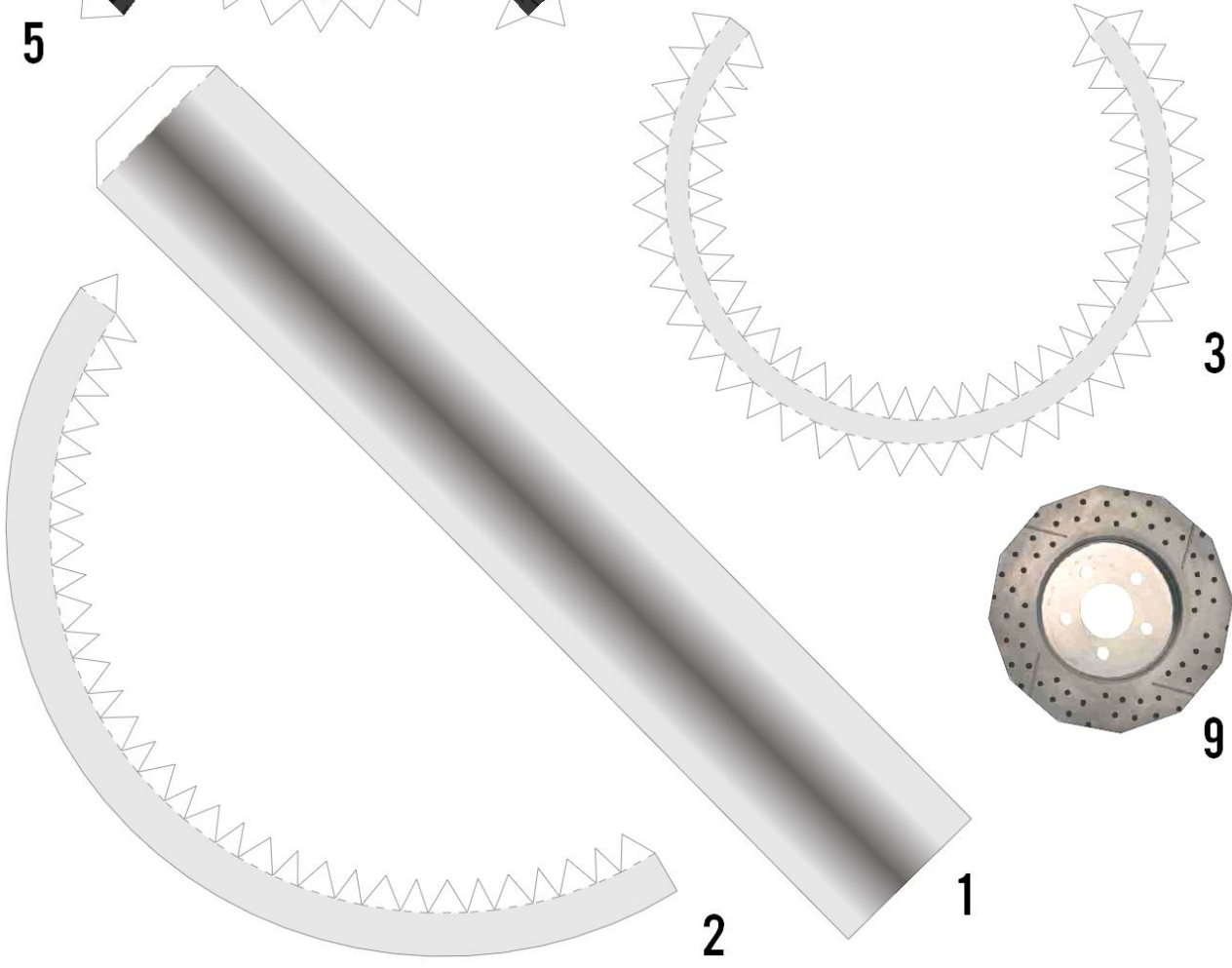
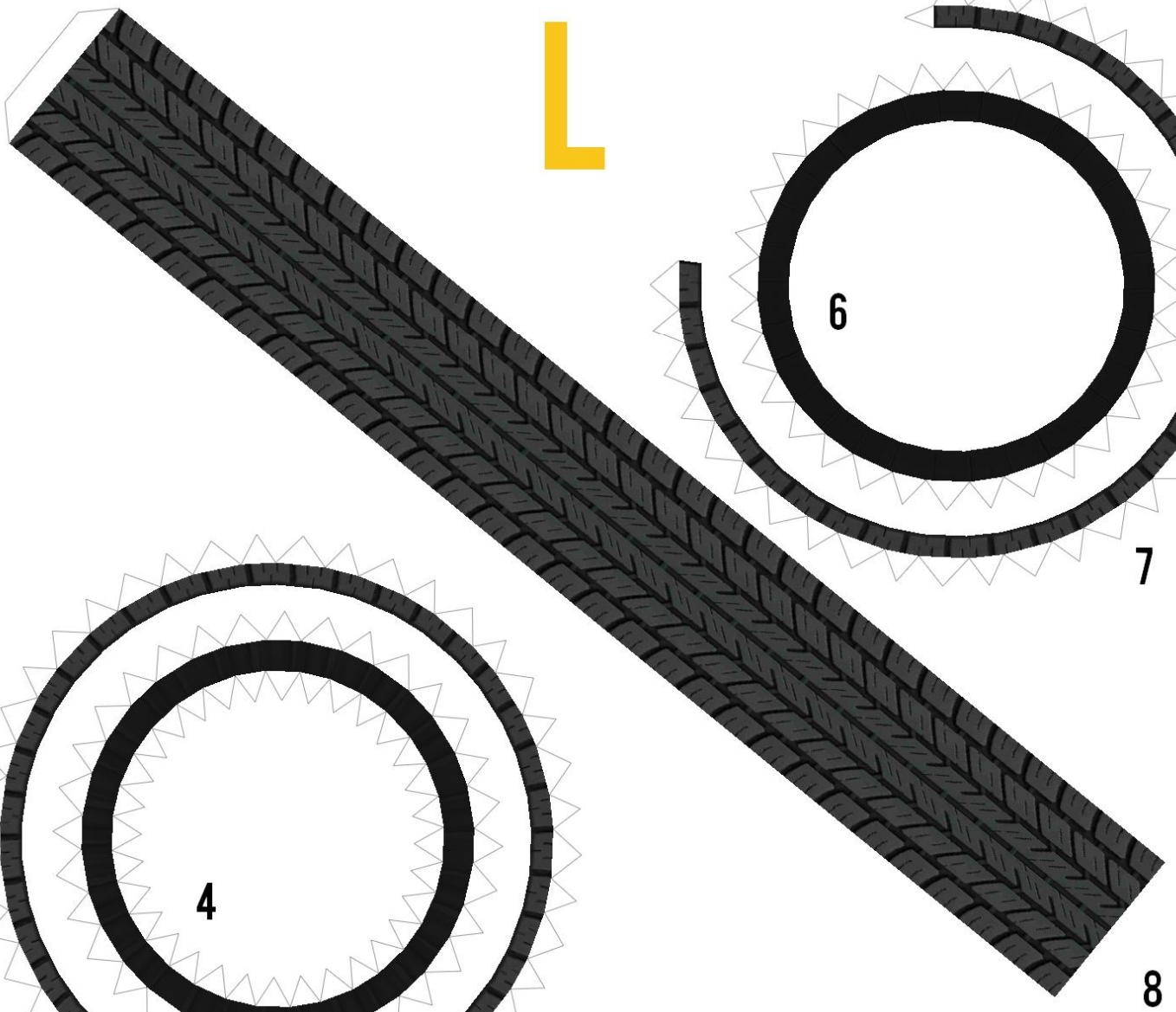
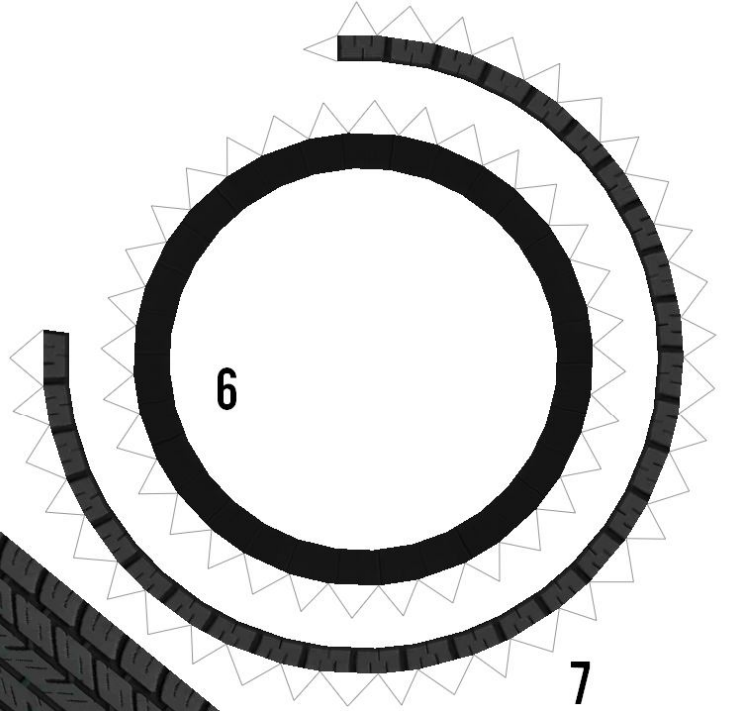
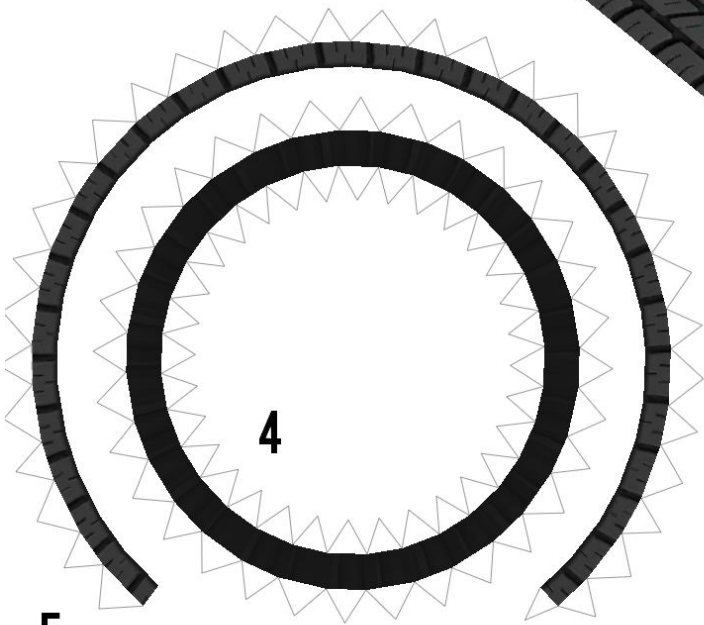
J



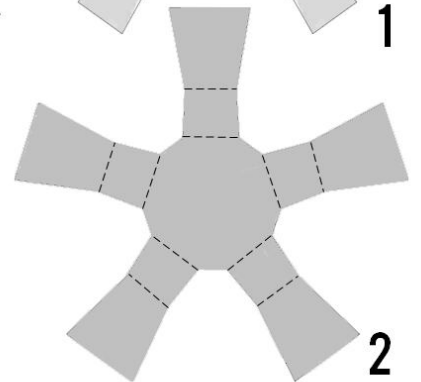
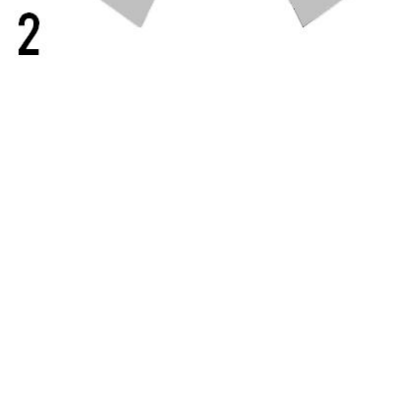
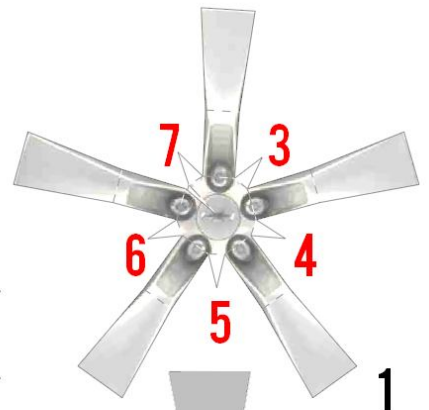
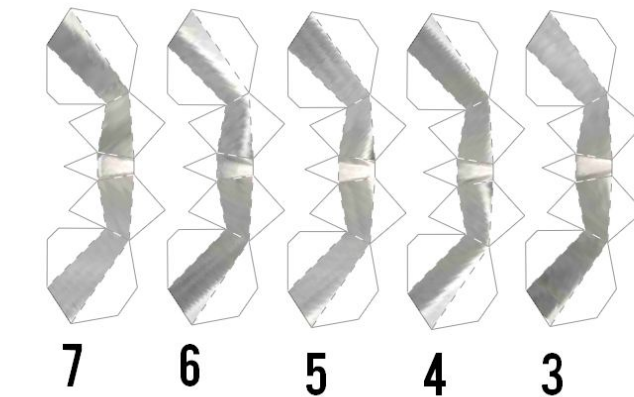
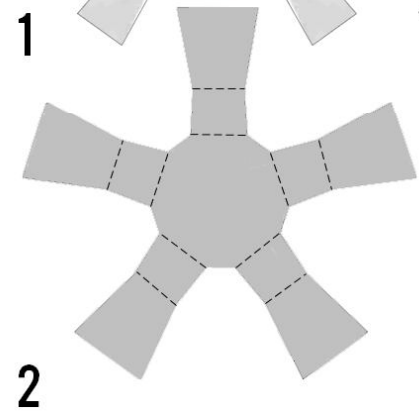
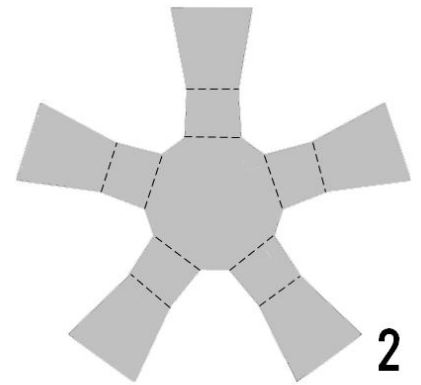
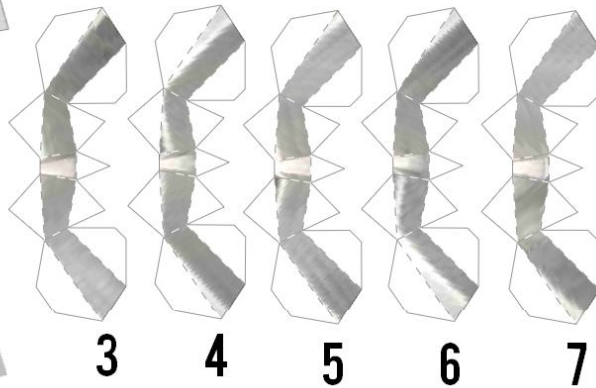
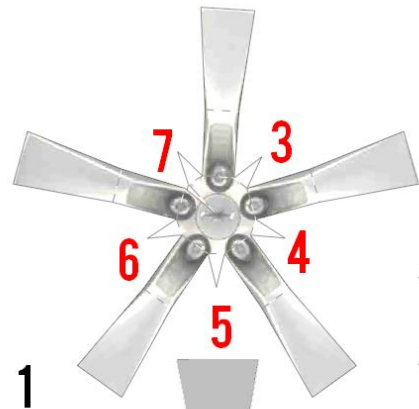
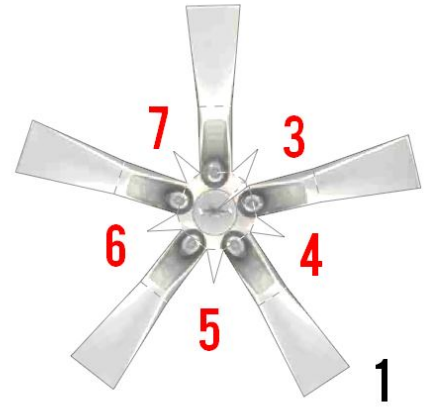
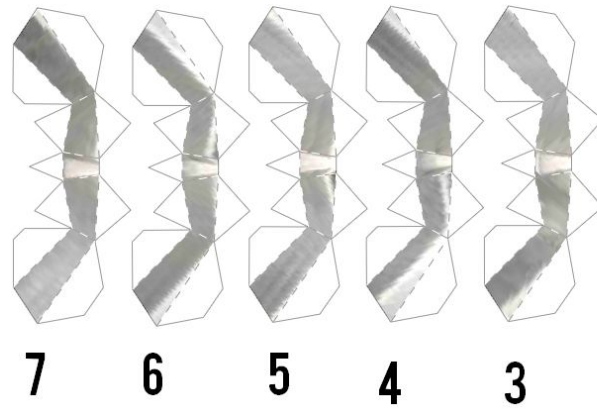
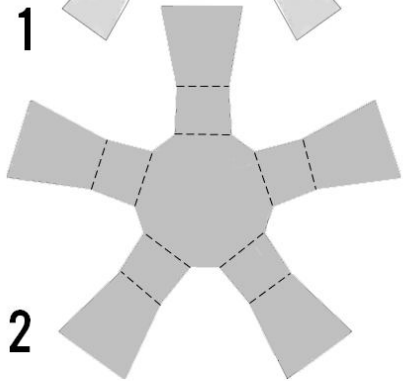
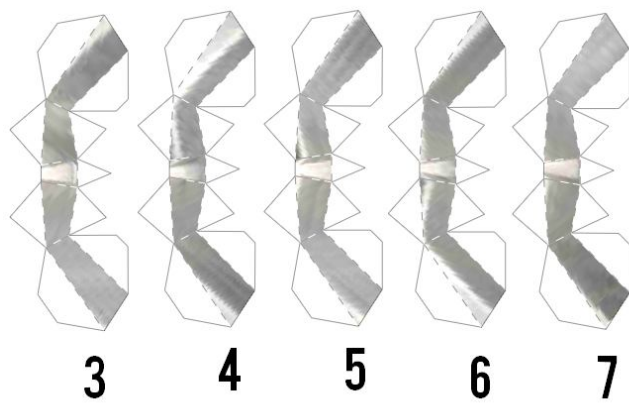
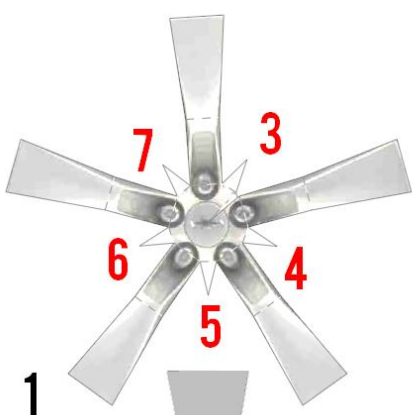
K



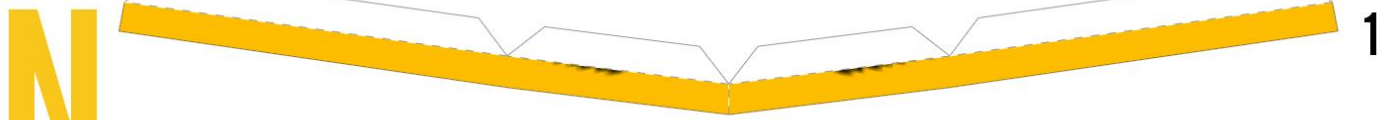
L



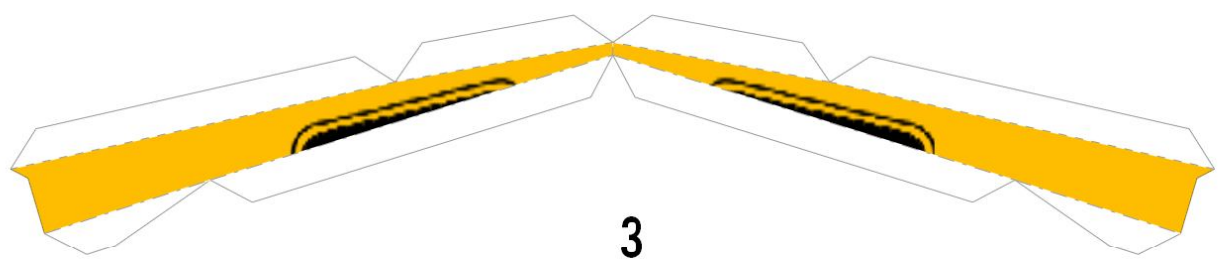
M



NOTE: PART 2 IS THE BACK OF THE WHEEL SPOKES, PART 1 BEING THE FRONT



1



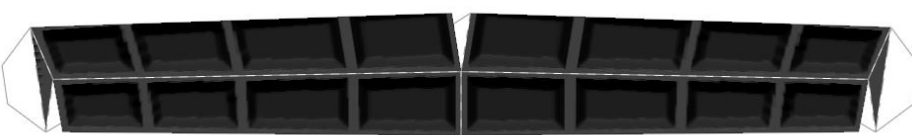
2

3



5

OPTIONAL

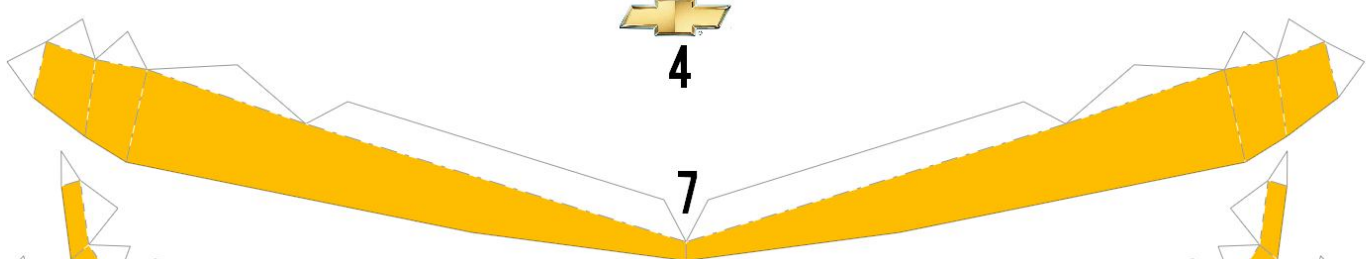


6

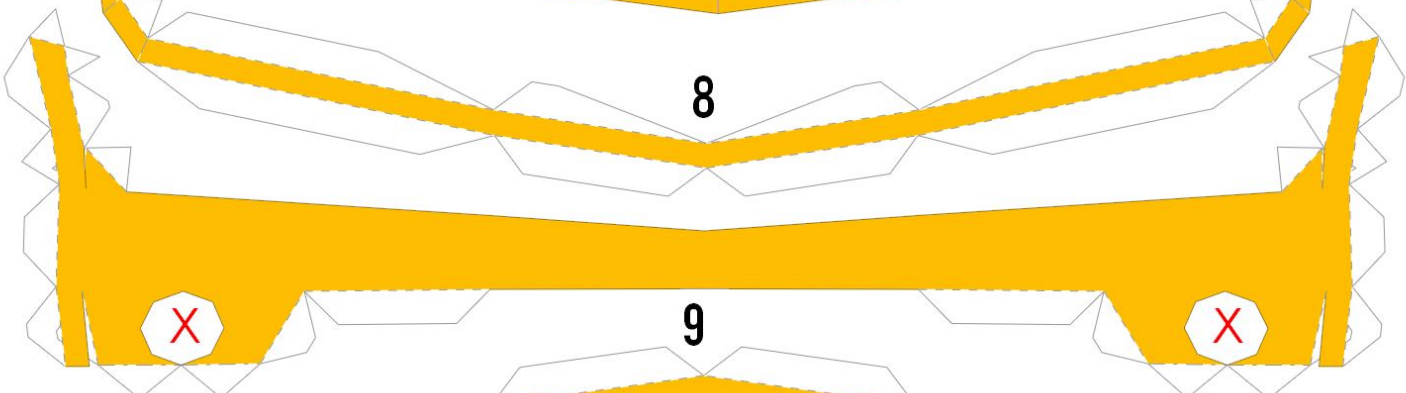
OPTIONAL



4

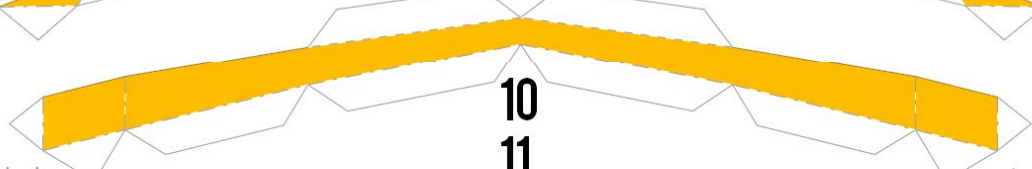


7



8

9

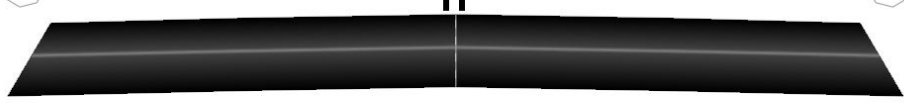


10

11



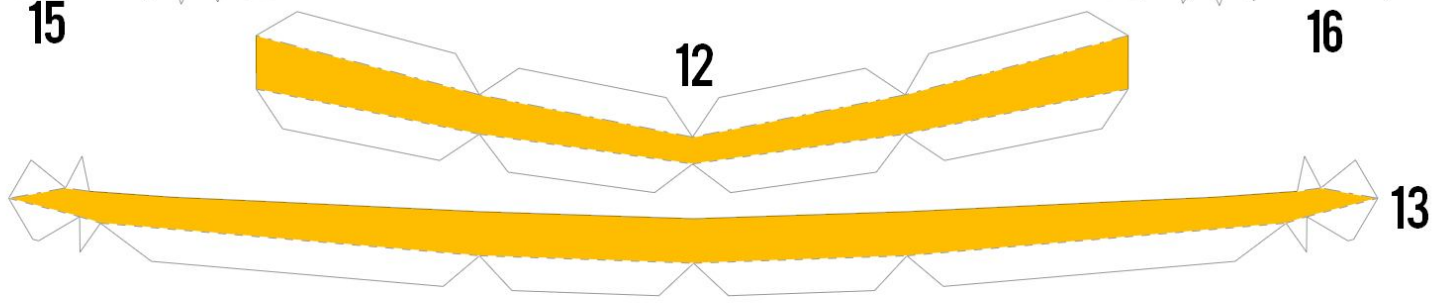
15



12



16



13



14

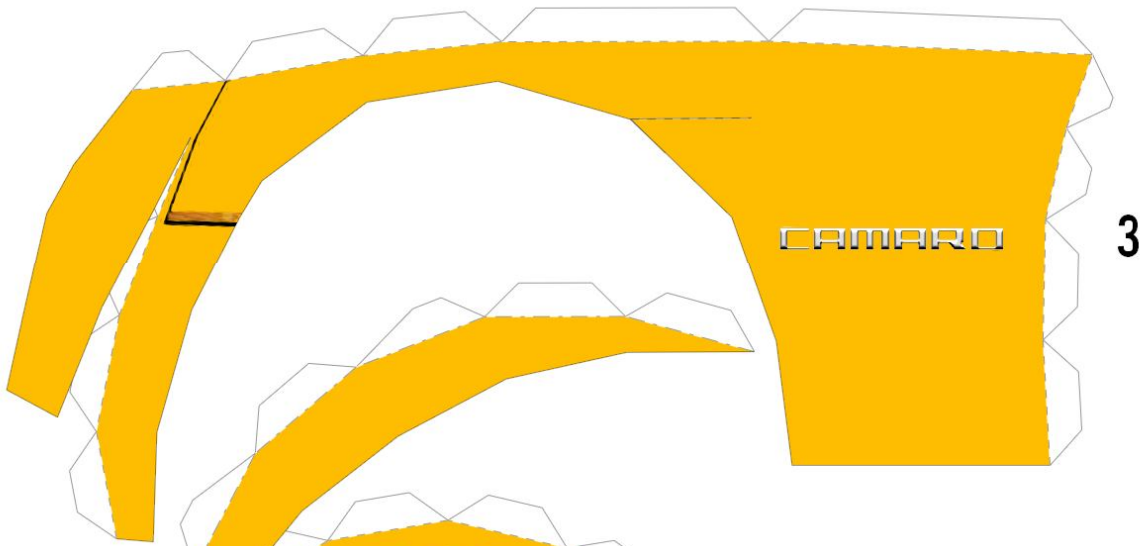
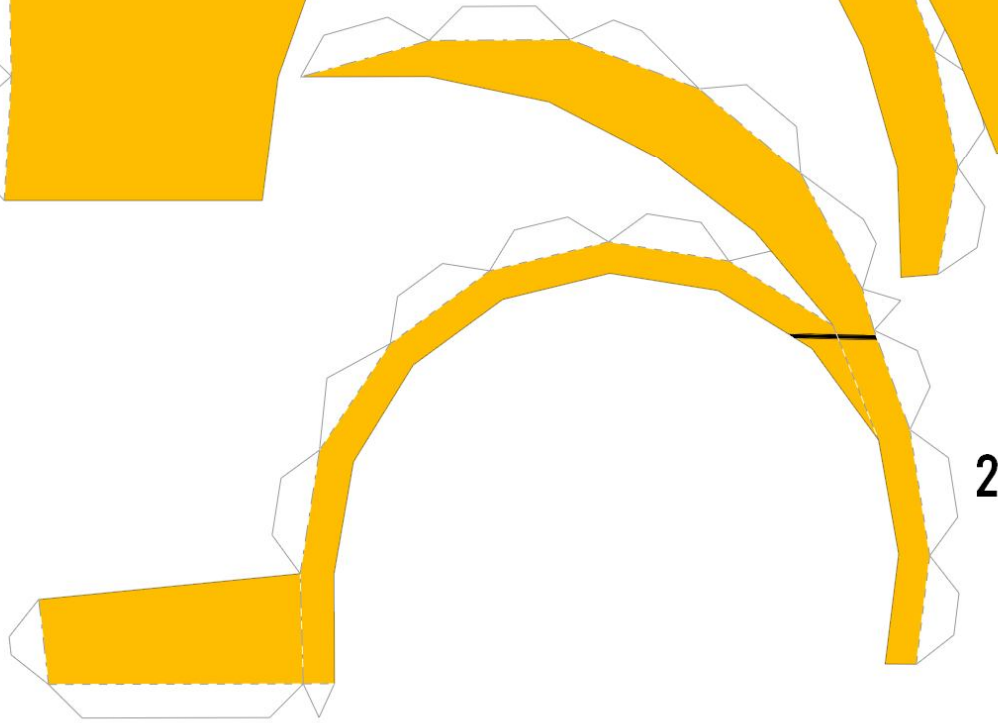


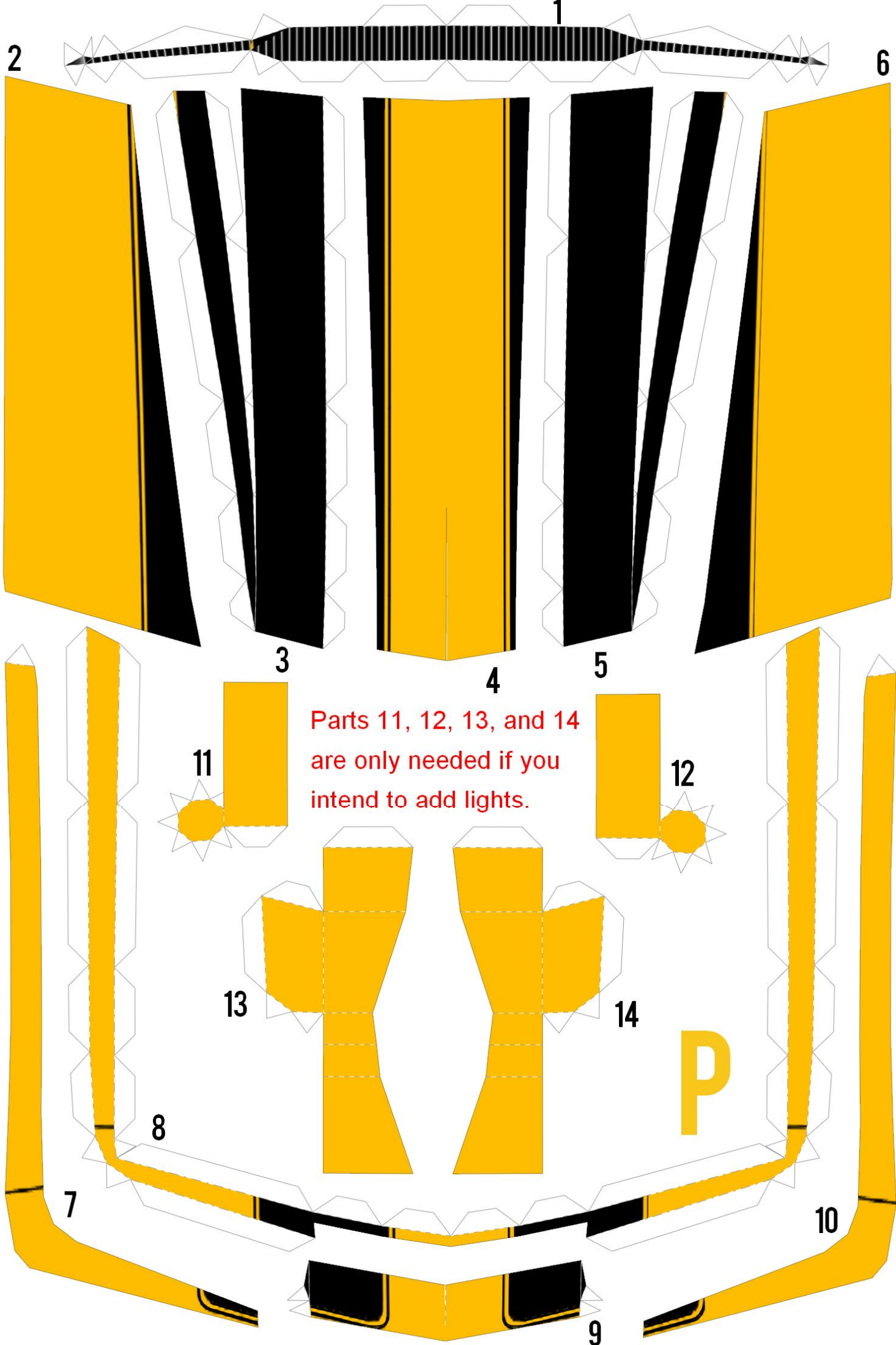
17



18

OPTIONAL

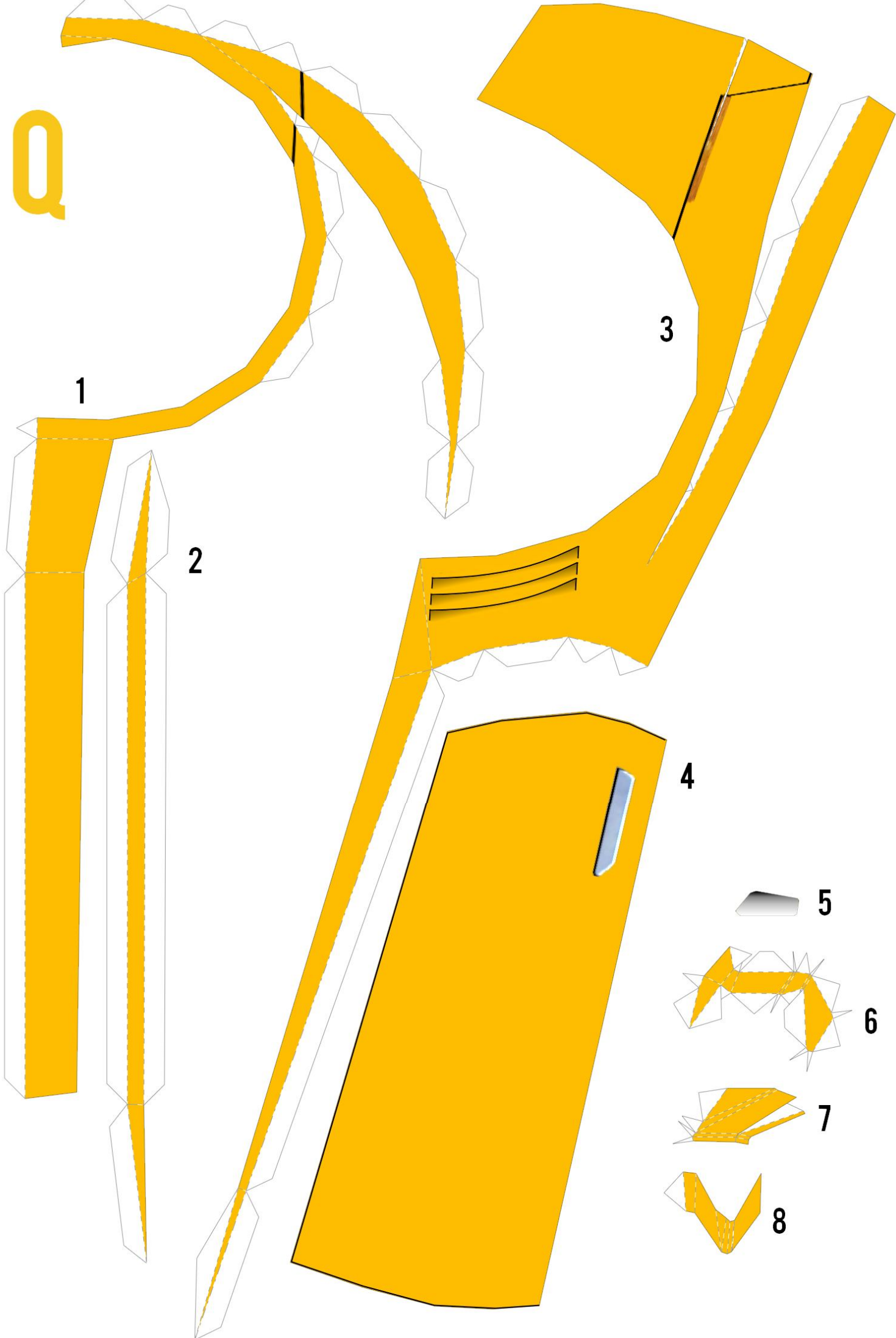




Parts 11, 12, 13, and 14
are only needed if you
intend to add lights.

P

Q



1

2

3

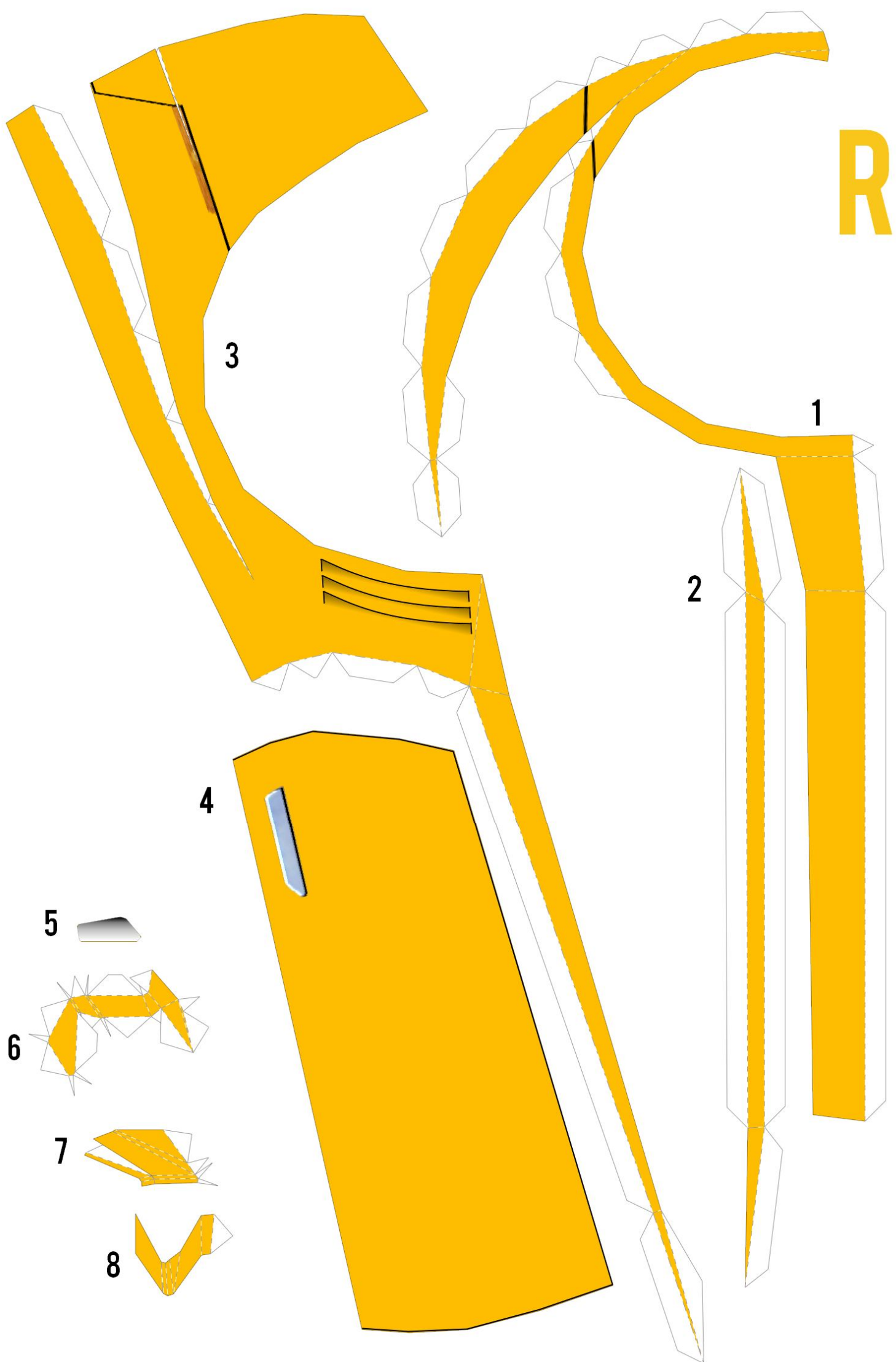
4

5

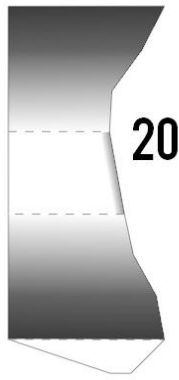
6

7

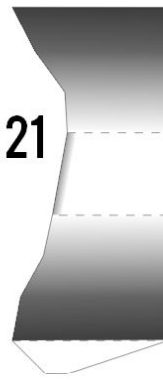
8



S



20



21

YOU MAY WANT TO TRIM THE EXHAUST TO BE SLIGHTLY SHORTER



19



18



17

1

2



3



4

5



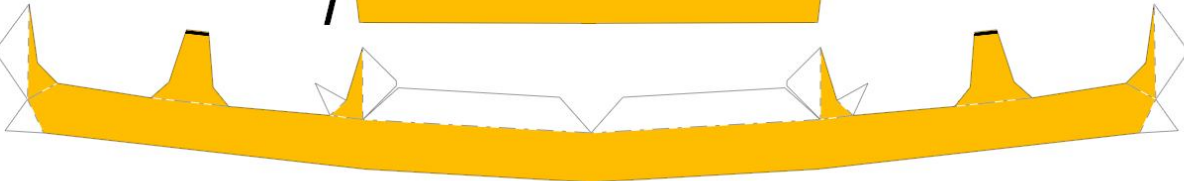
6



7



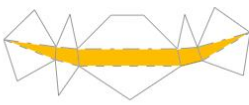
8



9



10



11



12



13



OPTIONAL

14



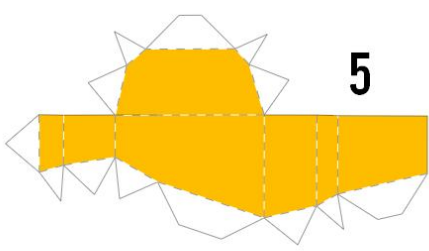
15



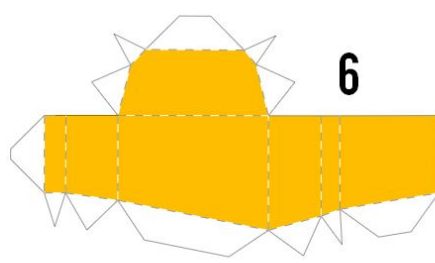
OPTIONAL

16





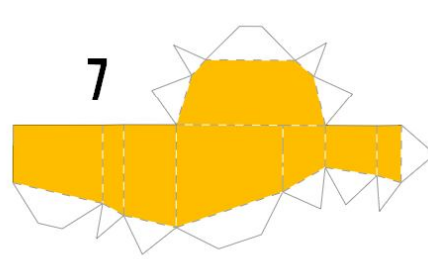
5



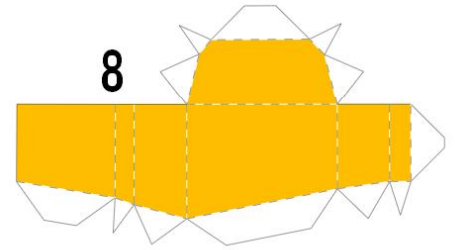
6



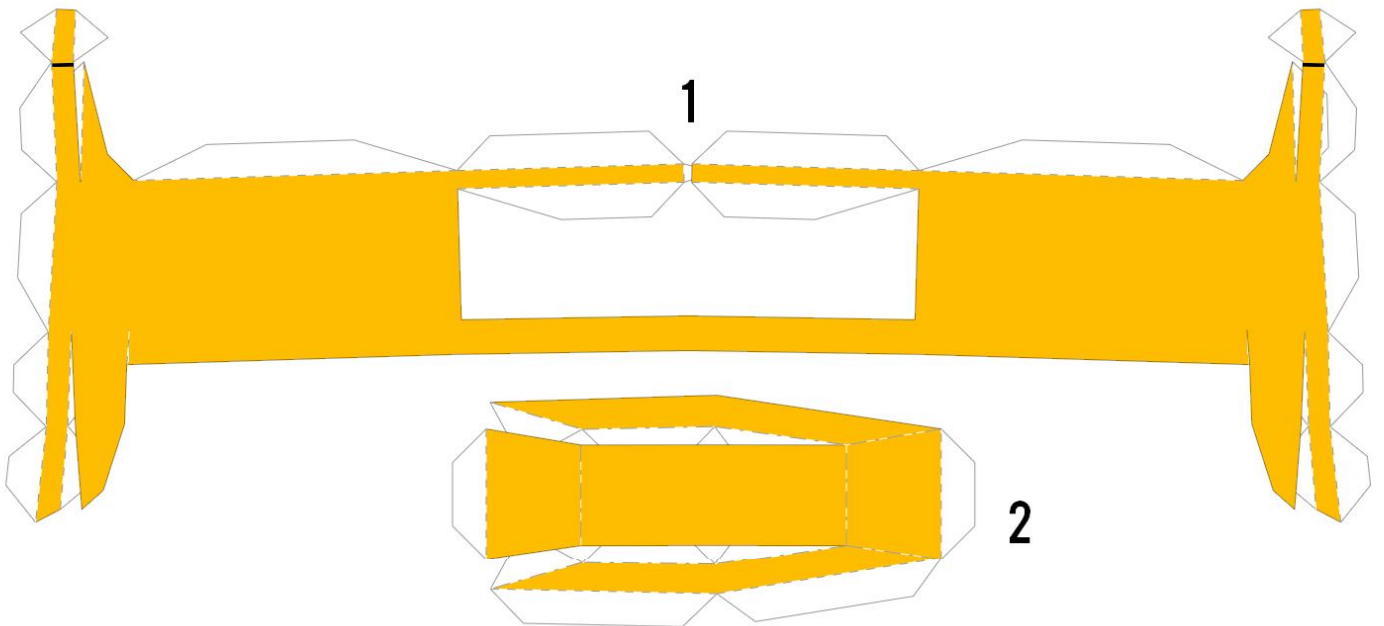
Parts 5, 6, 7 and 8 are only needed if you intend to add lighting.



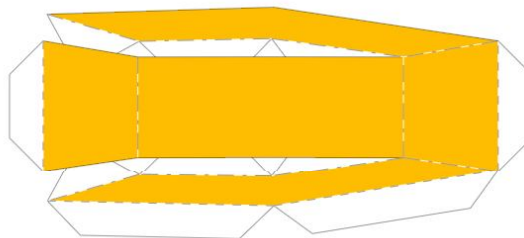
7



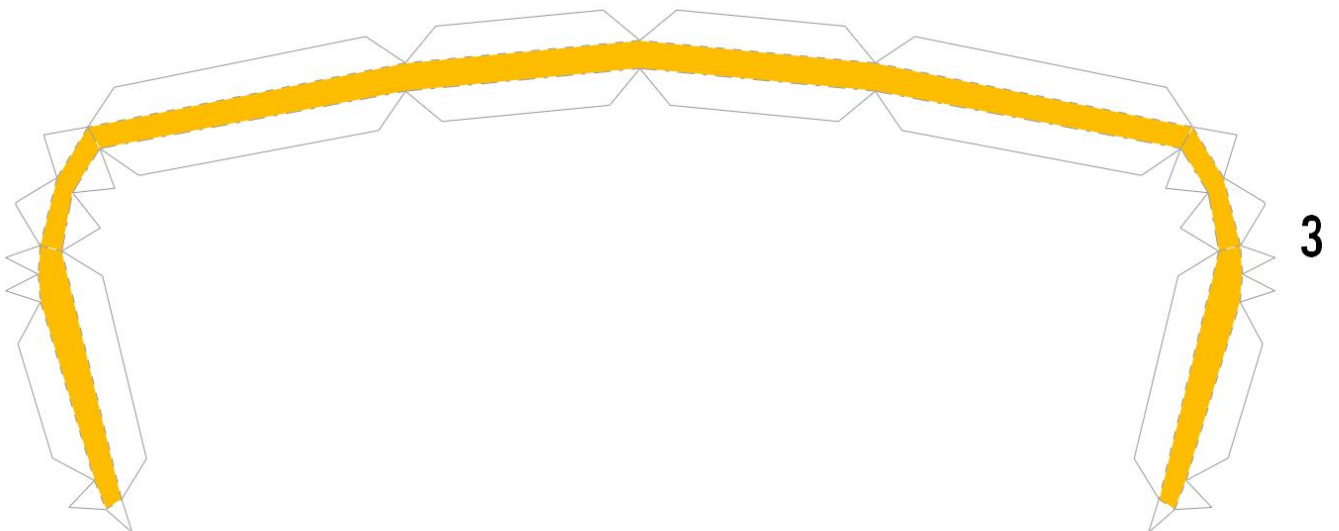
8



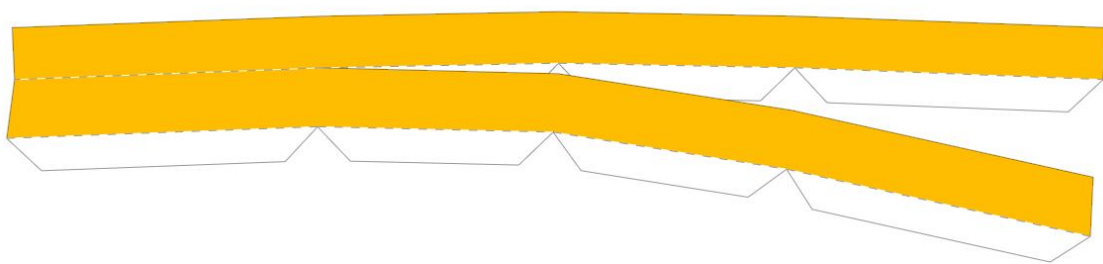
1



2

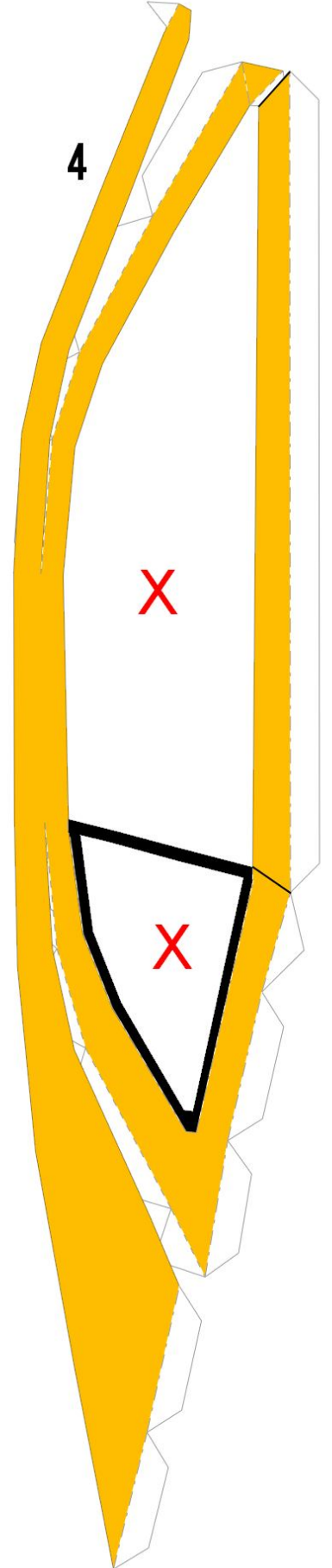
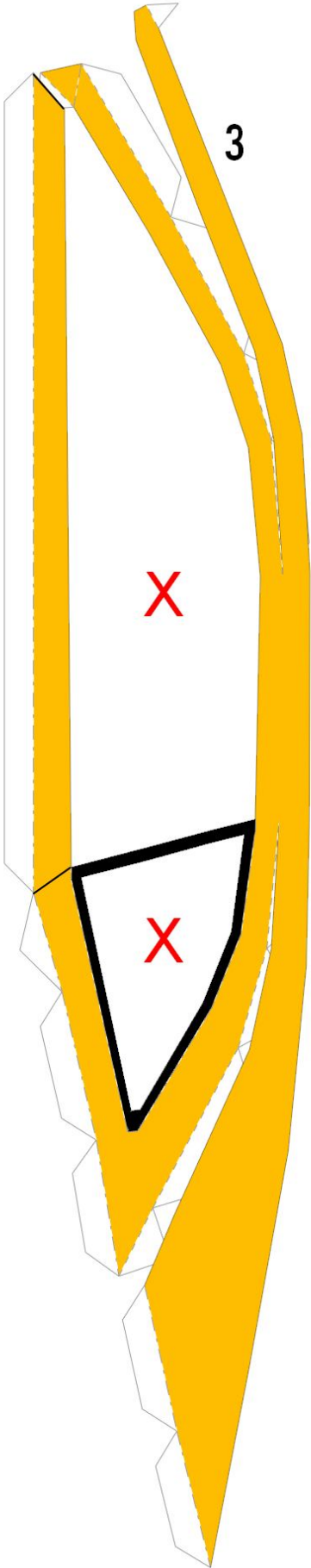
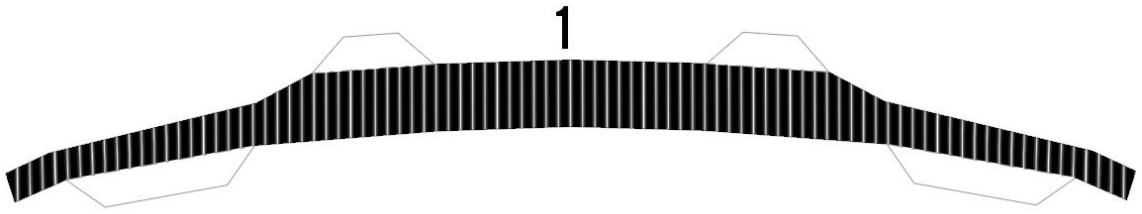


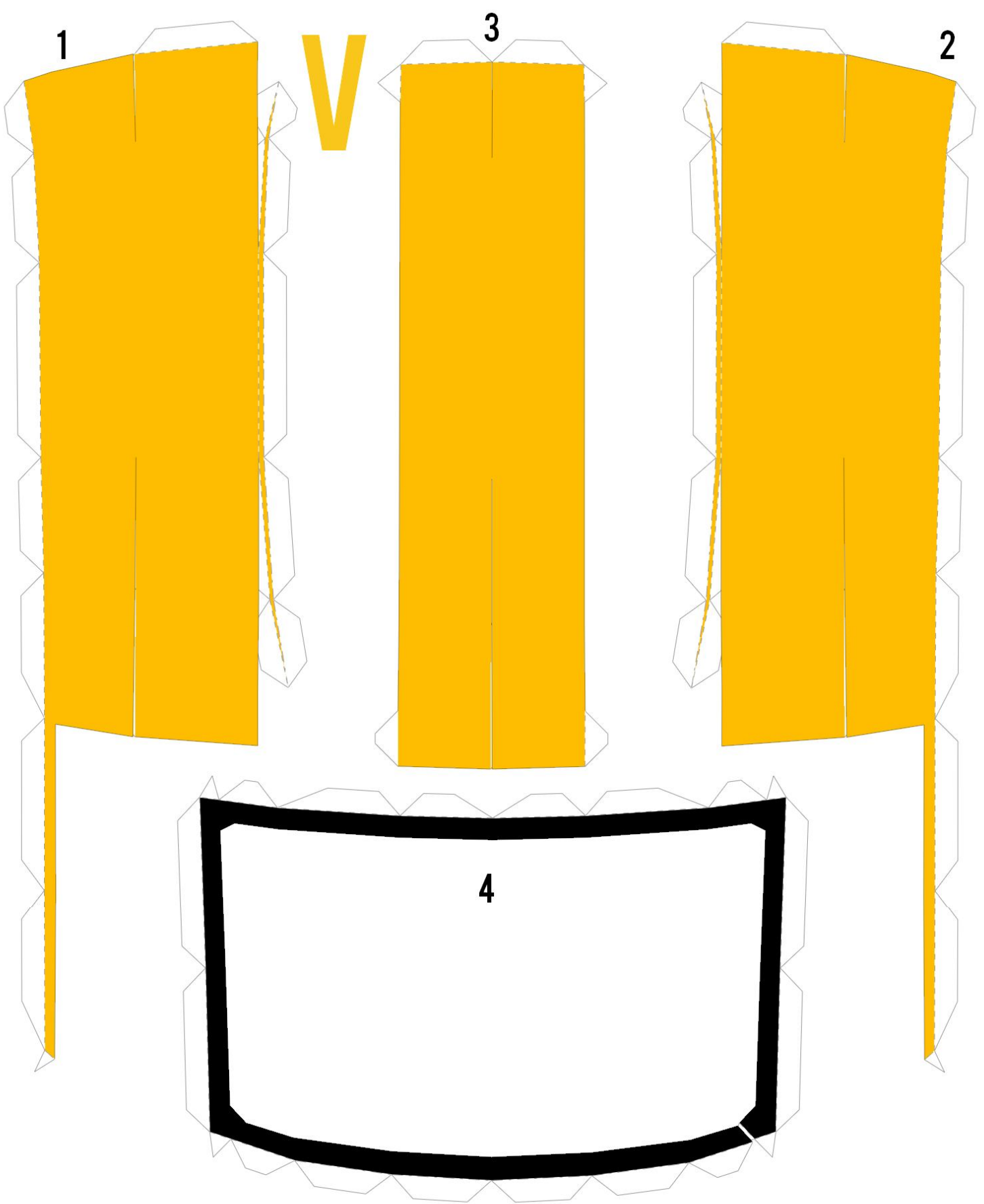
3



4

U



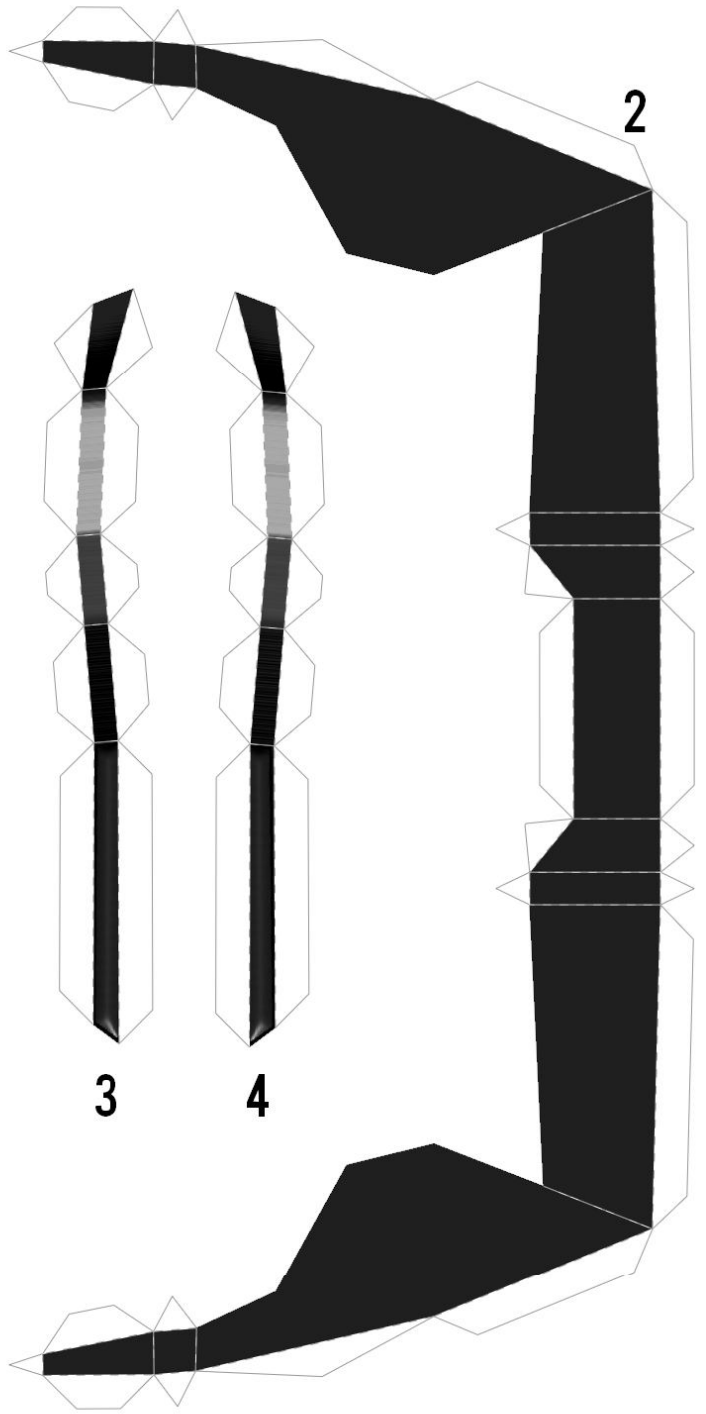


W

1

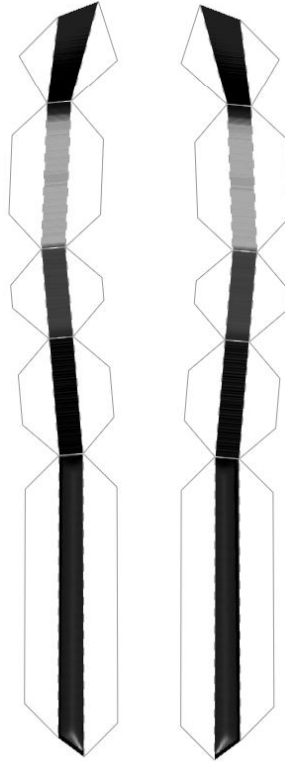


2

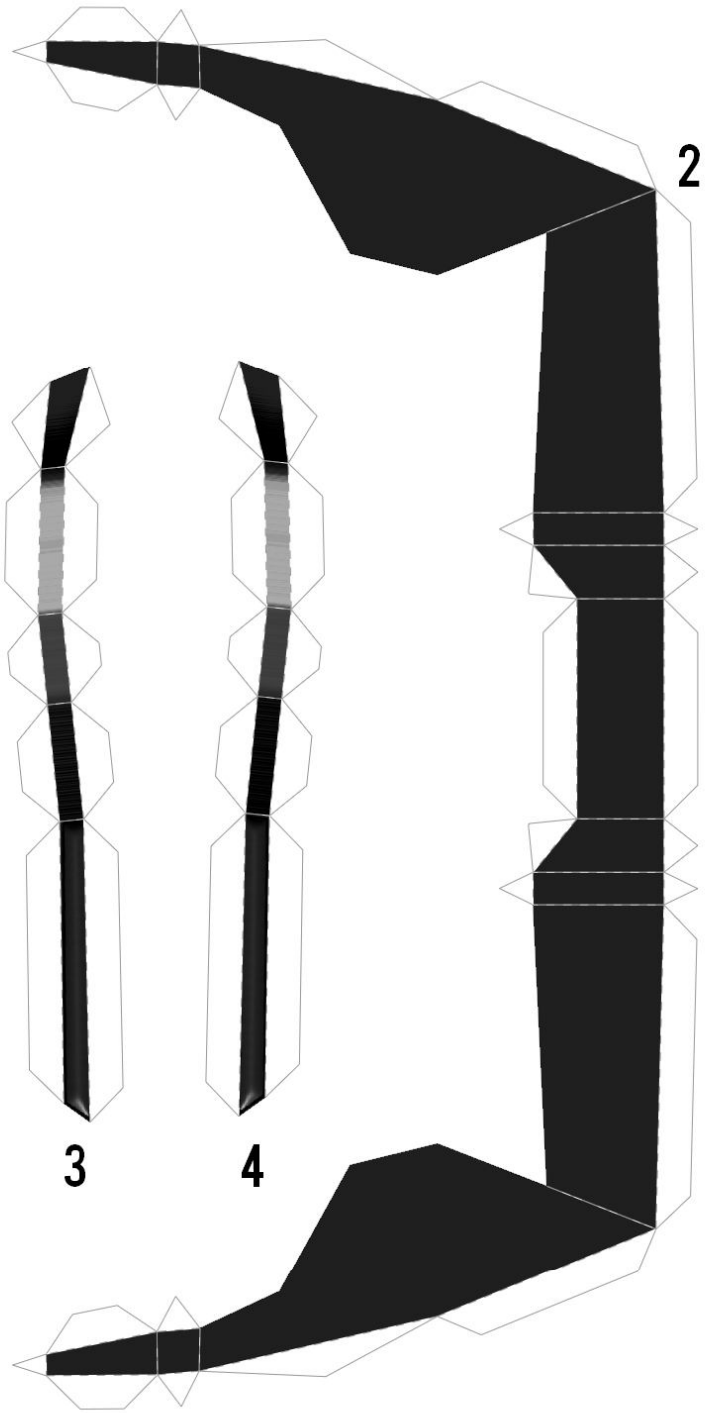


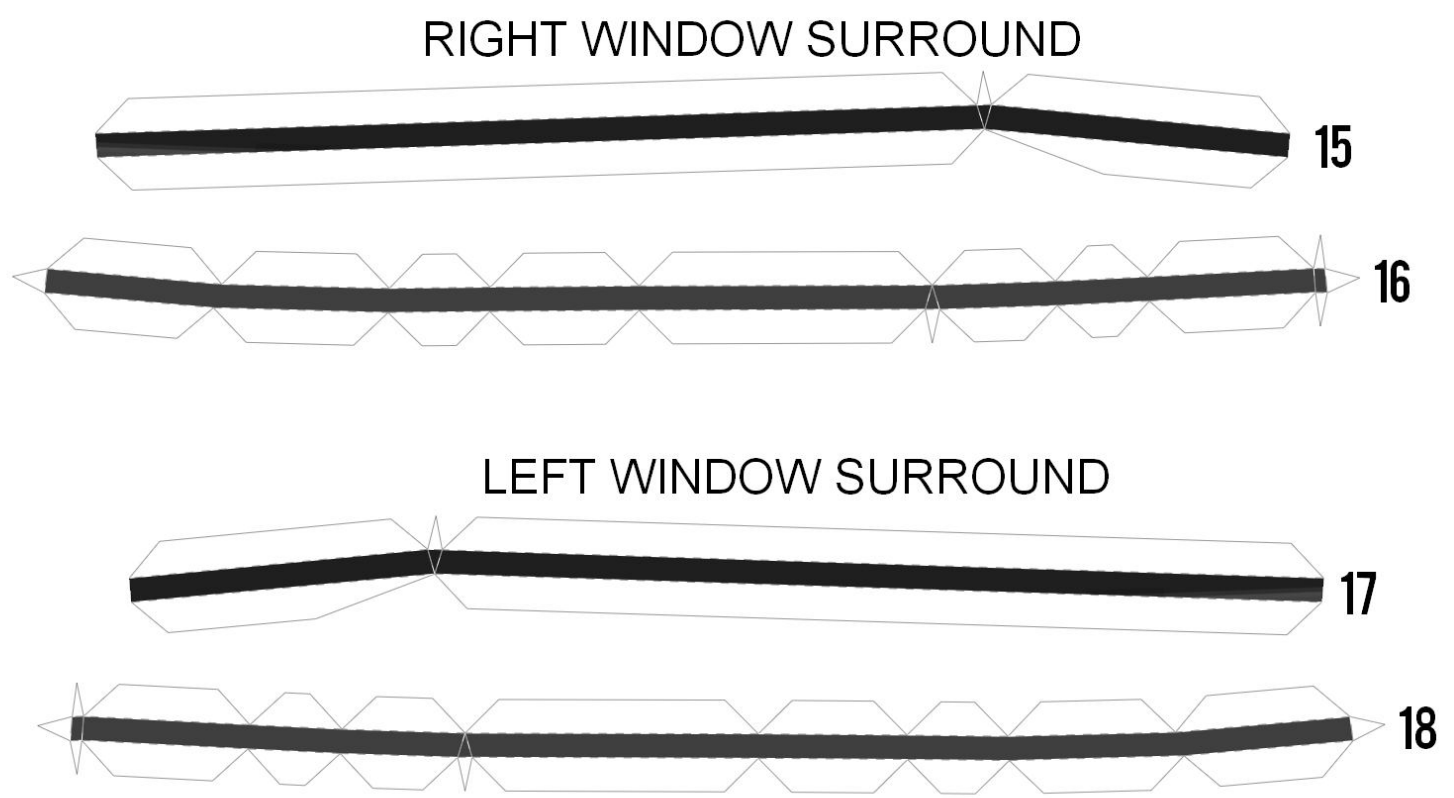
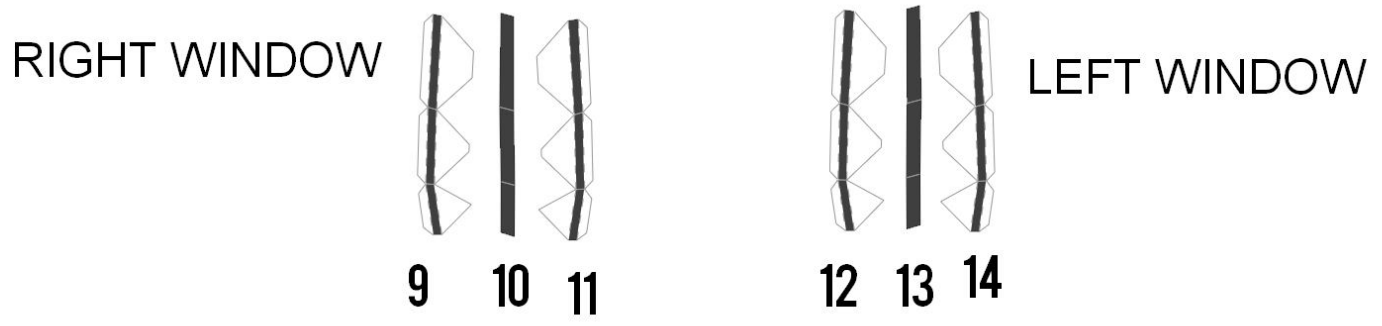
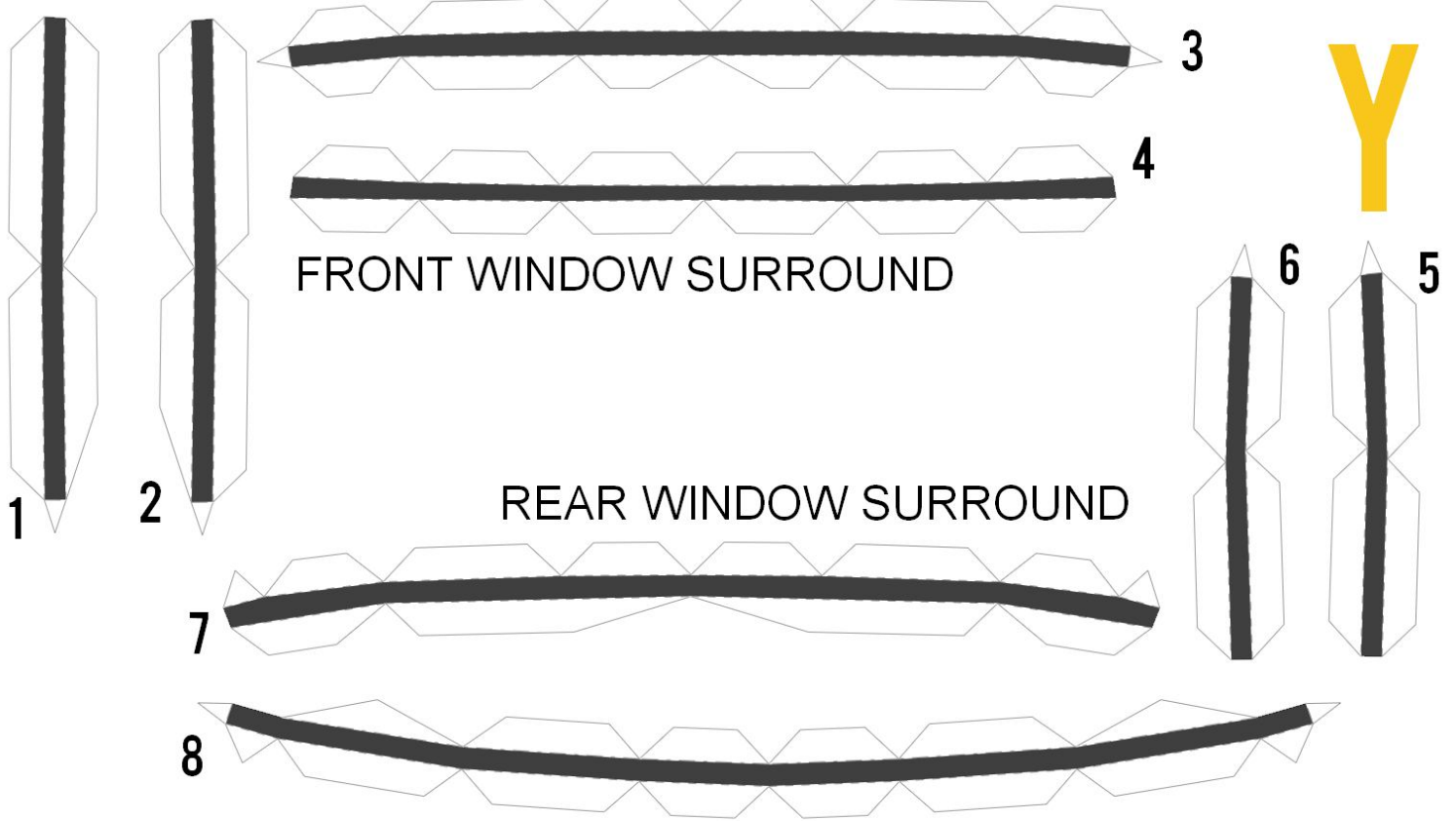
3

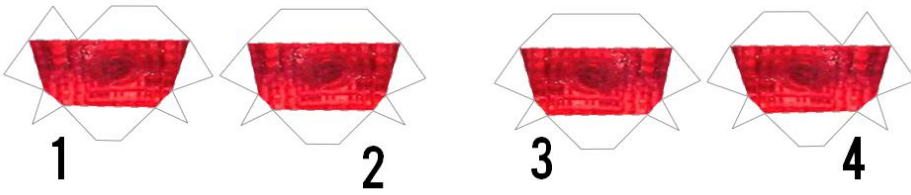
4



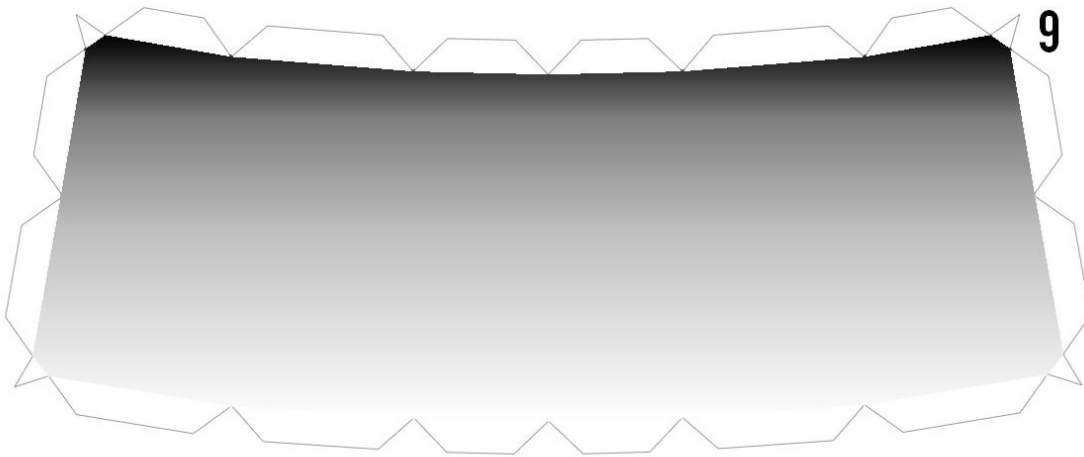
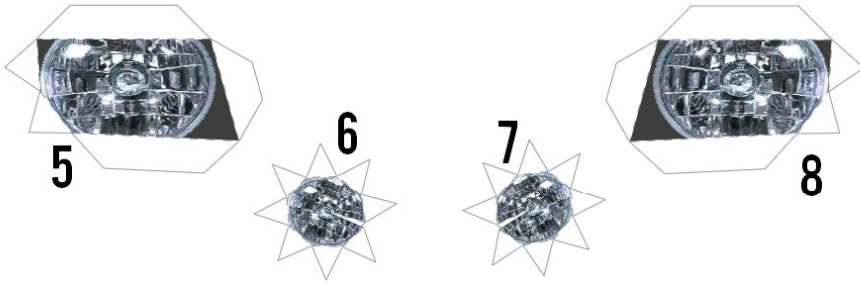
X



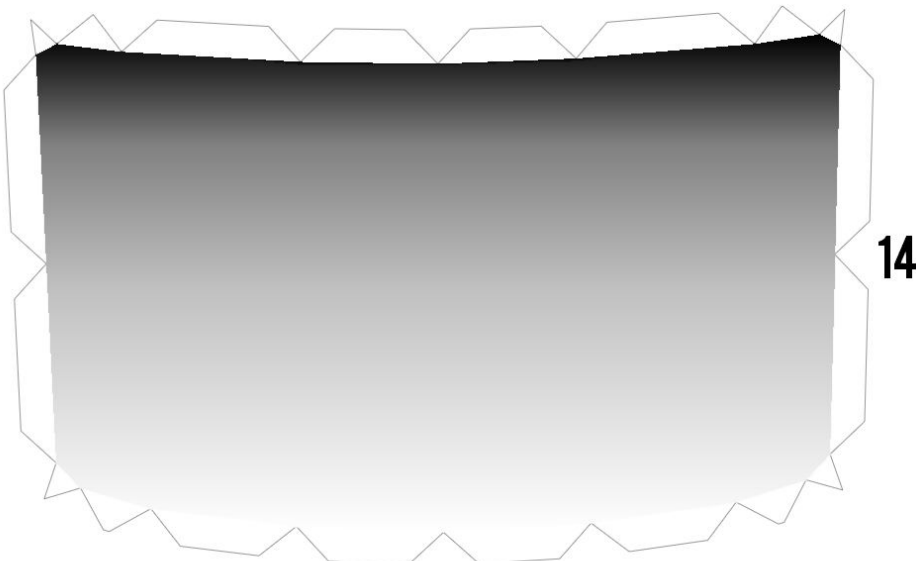
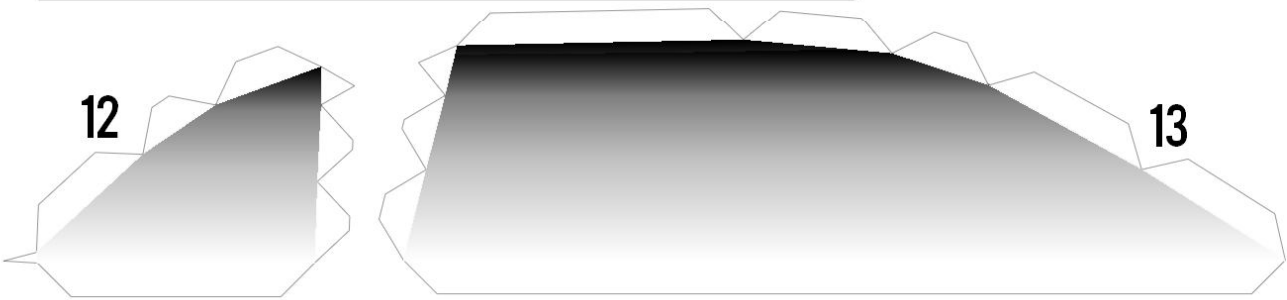
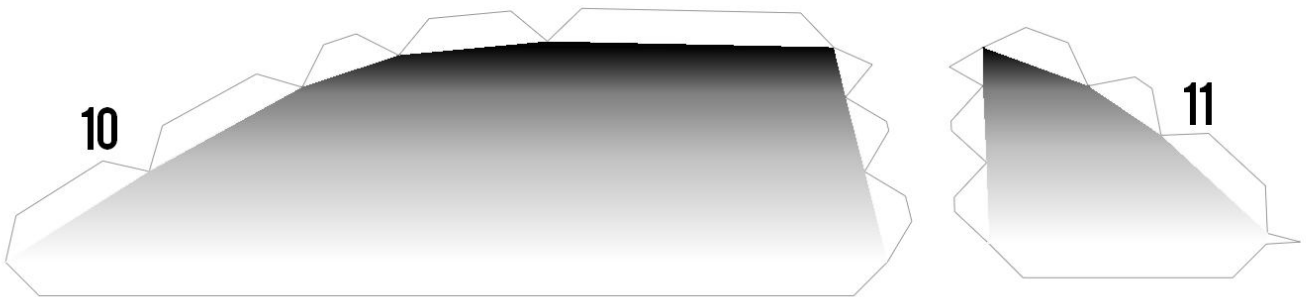


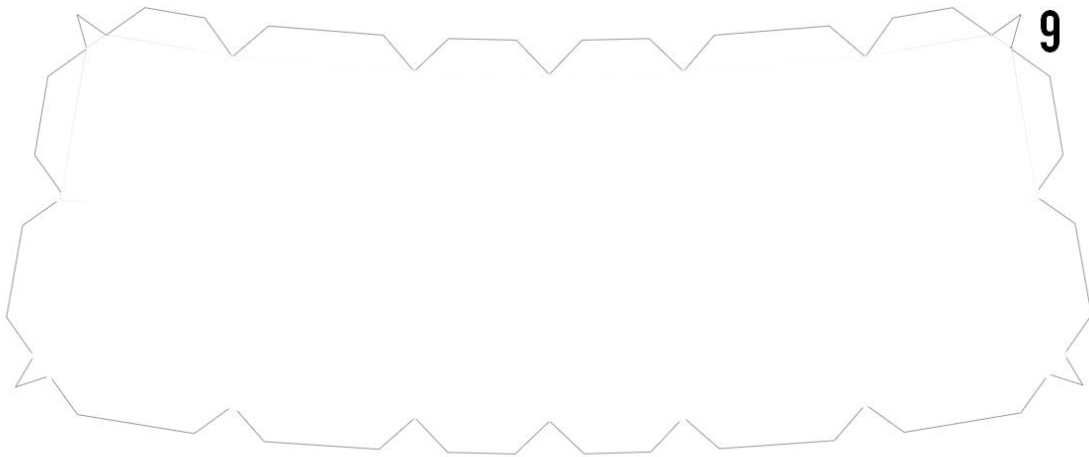


USE THESE IF ADDING LED LIGHTING



PRINT ON TRANSPARENT SHEET





PRINT ON
TRANSPARENT
SHEET

